

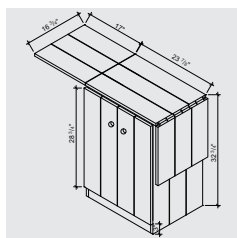
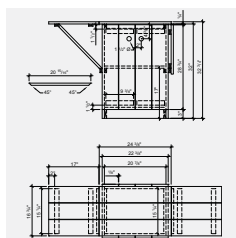
BACK YARD SERVICE CART

CONSTRUCTION PLAN



Difficulty level: **T** | EASY

Completion time: **4 hours**



BACK YARD SERVICE CART

A practical service cart with foldable shelves that is indispensable next to a barbecue.

This service cart is built with cedar, a naturally weather resistant wood that will last for many years.



TOOLS AND MATERIALS NEEDED

TOOLS

- > Circular saw
- > Table saw
- > Mitre saw
- > Drill-screwdriver (electric or cordless)
- > Countersink drill bit
- > Spade bit 1 1/2"
- > Tape measure
- > Square
- > Pencil

MATERIALS

- > 10 pieces, 1" x 6" x 96"
- > 3 pieces, 1" x 2" x 96"
- > 1 1/2" screws for treated wood
- > 3 - 36" piano hinges

BEFORE ASSEMBLY

CUTTING PLAN

Clearly identify each part with the corresponding letter before assembly. Sand the surface of the cut parts to clean the edges and to avoid splinters.

Boards, 1" x 6" x 96"

PIECES	QUANTITY	WIDTH (")	LENGTH (")
A CONTOUR	10	6	32
B DOOR	4	6	28 3/4
C TOP	3	6	23 7/8
D SHELF	6	6	17
E SHELF	3	6	20 7/8
F BASE	2	3	20 7/8
G BASE	2	3	15 1/4

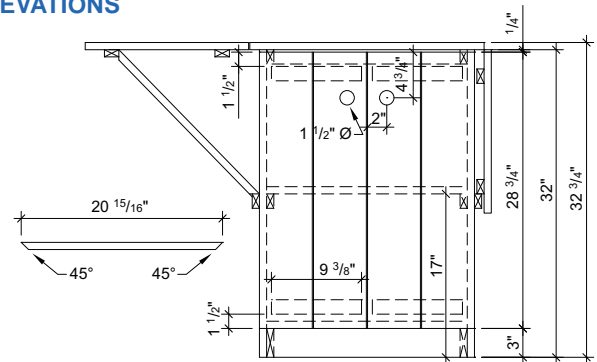
Boards, 1" x 2" x 96"

PIECES	QUANTITY	WIDTH (")	LENGTH (")
H STIFFENER	10	2	15 1/4
I STIFFENER	2	2	20 7/8
J STIFFENER	4	2	9 3/8
K 45° SUPPORT	2	2	20 15/16

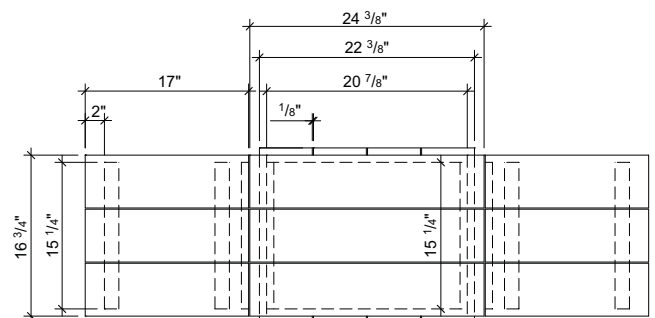
Piano hinge

PIECES	QUANTITY	WIDTH (")	LENGTH (")
L DOOR HINGE	2		28
M SHELF HINGE	1		15

ELEVATIONS



Front view



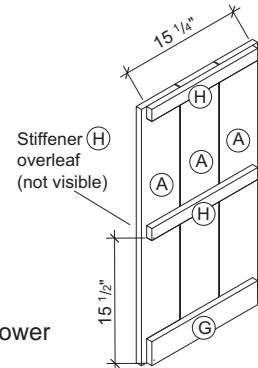
Top view

BACK YARD SERVICE CART

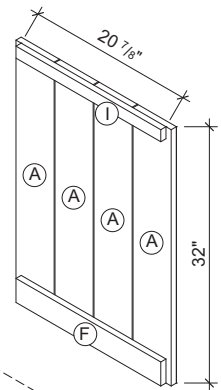
ASSEMBLY

Pre-pierce the parts before screwing, to avoid them from splitting.

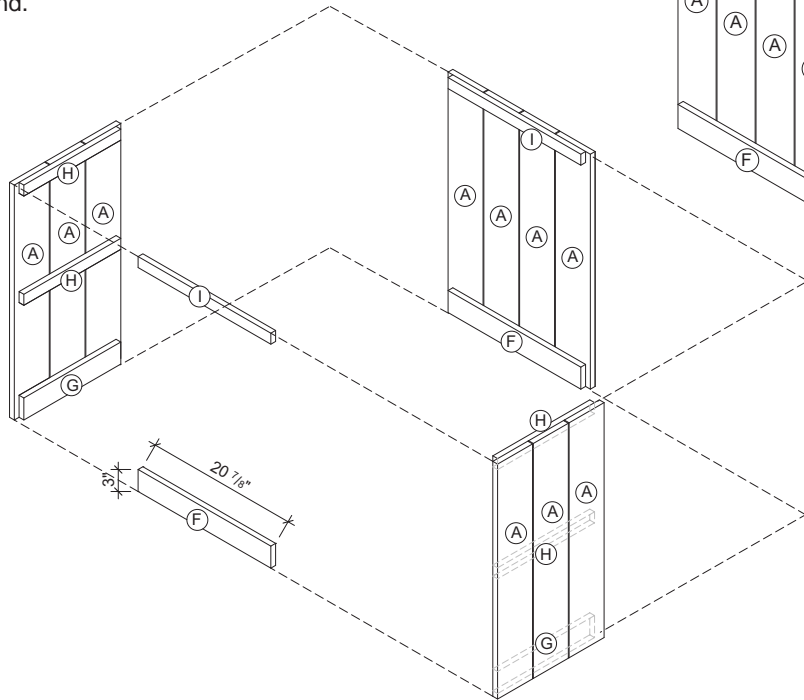
- 1 Assemble each of the two sides by juxtaposing three A boards, connected by three H stiffeners and a G stiffener, centered in relation to the three boards.
 - 1.1 Screw an H stiffener to the higher end of the A boards.
 - 1.2 Screw the G stiffener to the lower end. Note that this G part is made of a 1" x 6" part cut lengthways 1" x 3".
 - 1.3 Attach the last two H stiffeners on both sides at the centre of the assembly, 15 1/2" from the lower end of the A boards.



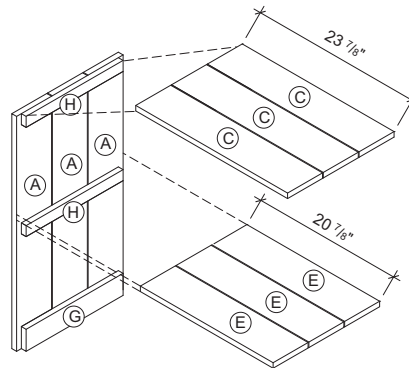
- 2 Assemble the back by juxtaposing four A boards, connected by an I stiffener and an F stiffener centered in relation to the four boards.
 - 2.1 Screw the I stiffener to the higher end of the A boards.
 - 2.2 Screw the F stiffener to the lower end.



- 3 Attach the back of the sideboard to the sides. The back should rest on the sides, and not be caught between them.
- 4 Screw an I stiffener on the front to the two H stiffener above the side panels.
- 5 Screw an F stiffener on the front to two G stiffener of the side panels.



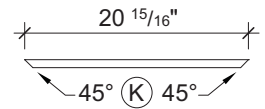
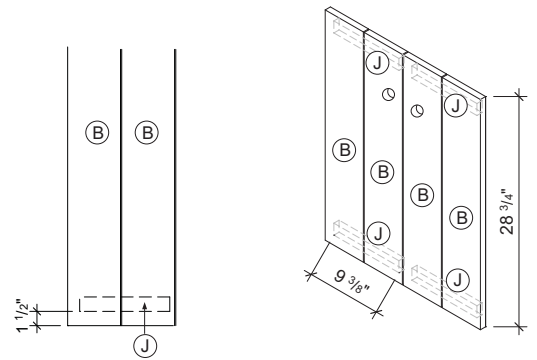
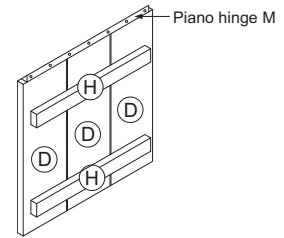
- 6 Lay the E boards of the interior shelf on the central H stiffeners, and screw.
- 7 Lay the C boards on the higher H stiffeners. The C boards should be centered in relation to the sides. Screw.



BACK YARD SERVICE CART

ASSEMBLY (CONT'D)

- 8 Assemble the two hinged shelves by using three D parts, connected by H stiffeners attached 2" from the ends of the D boards.
- 9 Screw the piano hinges M to the shelves, and then to the sideboard.
- 10 Assemble each door by using two B parts connected by J stiffener that are centered and placed 1 1/2" from the ends of B.
- 11 Pierce 1 1/2" holes for handles, or screw on weather resistant handles.
- 12 Screw the L piano hinges to the doors and then to the sides of the sideboard.
- 13 Support of the hinged shelves, when unfolded, is ensured by the K parts, which ends are cut at 45 degrees, and are supported by the central external stiffeners.



Although the cedar is weather resistant, it is recommended to store the sideboard during the winter to give it a longer life.

