

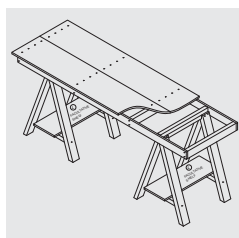
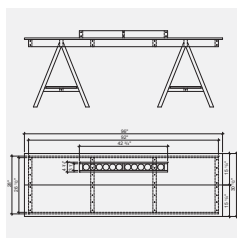
# ART TRESTLE TABLE

## CONSTRUCTION PLAN



Difficulty level: **T** | EASY

Completion time: **4 hours**



# ART TRESTLE TABLE

This table is easy to build, carry and store, and offers a large work surface.

This art table is designed to provide you with all the work space you might need. Measuring 96" long by 28" deep and 36" high, it is a simple, sleek and attractive addition to any creative work corner! Its trestle legs make it strong and sturdy, and it offers space for a practical lower storage shelf if desired.



## TOOLS AND MATERIALS NEEDED

### TOOLS

- > Drill
- > Circular saw
- > Mitre saw
- > Jigsaw
- > Vibrating sander
- > Hammer
- > Screwdriver
- > Square
- > Putty knife
- > Nail punch
- > Measuring tape
- > 120 and 150 grit sandpaper
- > Paint prep tools and brushes

### MATERIALS

- > 2 boards of pine 1" x 16" x 96"
- > 1 board of pine 1" x 12" x 84"
- > 5 pieces of pine 2" x 4" x 96"
- > 1 board of pine 1" x 6" x 48"
- > 3 boards of pine 1" x 4" x 96"
- > 2 pieces of pine 2" x 2" x 96"
- > 1 1/2" and 3" No. 8 wood screws
- > Finishing nails
- > Wood putty
- > Paint
- > Floor protectors
- > 500 ml Mason jars

# ART TRESTLE TABLE

## BEFORE ASSEMBLY

### CUTTING LIST

Mark each piece clearly with the corresponding letter before assembling.  
Sand the edges and ends of the pieces if necessary.

The spreader braces and stretcher for the trestles (pieces F and G) can also be made from a piece of 2" x 4" cut lengthwise into two strips of 2" x 2".

#### Boards pine - 1" x 16"

PIECES	QUANTITY	WIDTH (")	LENGTH (")
A TABLE TOP	2	15 1/4	96

#### Boards pine - 1" x 6"

PIECES	QUANTITY	WIDTH (")	LENGTH (")
K BOTTOM OF BOX	1	4 3/4	42 3/4

#### Boards pine - 1" x 4"

PIECES	QUANTITY	WIDTH (")	LENGTH (")
B TABLE FRAME	2	3 1/2	92
H SIDE OF BOX	2	3 1/2	42 3/4
J BOX DIVIDER	1	3 1/2	3 3/4

#### Boards pine - 1" x 12"

PIECES	QUANTITY	WIDTH (")	LENGTH (")
L OPTIONAL LOWER SHELF	2	11 1/2	30

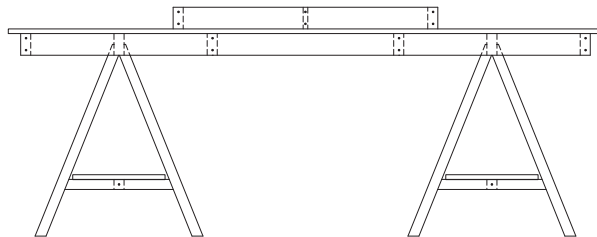
#### Pieces pine - 2" x 4"

PIECES	QUANTITY	WIDTH (")	LENGTH (")	ANGLE (°)
C TABLE FRAME	4	3 1/2	26 1/2	
D TRESTLE LEG	8	3 1/2	34	22
E TRESTLE TOP	2	3 1/2	25 7/8	
I END OF BOX	2	3 1/2	3 3/4	

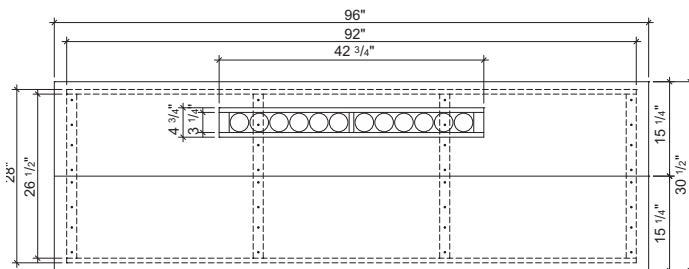
#### Pieces pine - 2" x 2"

PIECES	QUANTITY	WIDTH (")	LENGTH (")	ANGLE (°)
F TRESTLE BRACE	4	1 5/8	17 1/2	22
G TRESTLE STRETCHER	2	1 5/8	20 3/4	

### ELEVATIONS



Front view



Top view

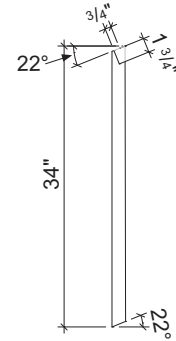
# ART TRESTLE TABLE

## CUTTING

Cut all the pieces to the sizes given in the cut list. Once the pieces are cut, use the following instructions to make the bevel cuts.

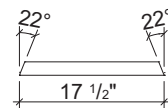
### TRESTLE LEGS D

- 1 Cut one end of the 8 trestle legs at a 22° angle.
- 2 To make the notch: At the right-angled end of the leg, starting precisely from one of the corners, draw a line at a 22° angle parallel to the cut at the other end. Then draw a line at 90° to the 22° line. This (right-angled) notch measures 1 3/4" x 3/4".
- 3 Cut the notch out with a jigsaw; you want the trestle top bar to be able to fit snugly into the top of the legs.



### TRESTLE SPREADER BRACES F

- 4 Cut the 4 braces at an inward 22° angle so they align perfectly with the inside of the legs, like the base of a triangle.



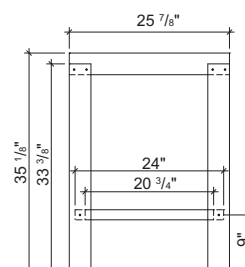
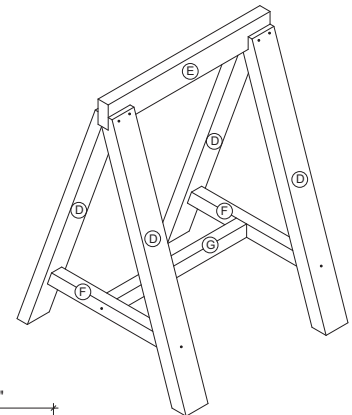
## ASSEMBLY

Pre-drill holes with a 1/4" bit to prevent the wood from splitting. Countersink these holes for the screw heads. You can use a countersink bit that matches the screws. For greater solidity, glue the pieces together before driving the screws.

**Assembly option:** For a neater finish, assemble the table top, optional shelf and storage box with nails. Sink the nail heads with a nail punch before filling with wood putty. An air finish nailer will help you get the job done more quickly.

### TRESTLES

- 5 Fasten the notched end of the 4 legs D to the wide edges of the trestle top E at both ends using two 1 1/2" No. 8 screws.
- 6 Attach the angled braces F to the inside of the legs D, 9" from the bottom, using 3" No. 8 screws.
- 7 Next, fasten the stretcher G at right angles between the two braces F to join them at the centre.
- 8 Repeat these steps for the other trestle.



To make sure your table is properly stable, stand the trestles on a firm, level surface when assembling.

# ART TRESTLE TABLE

## ASSEMBLY (CONT'D)

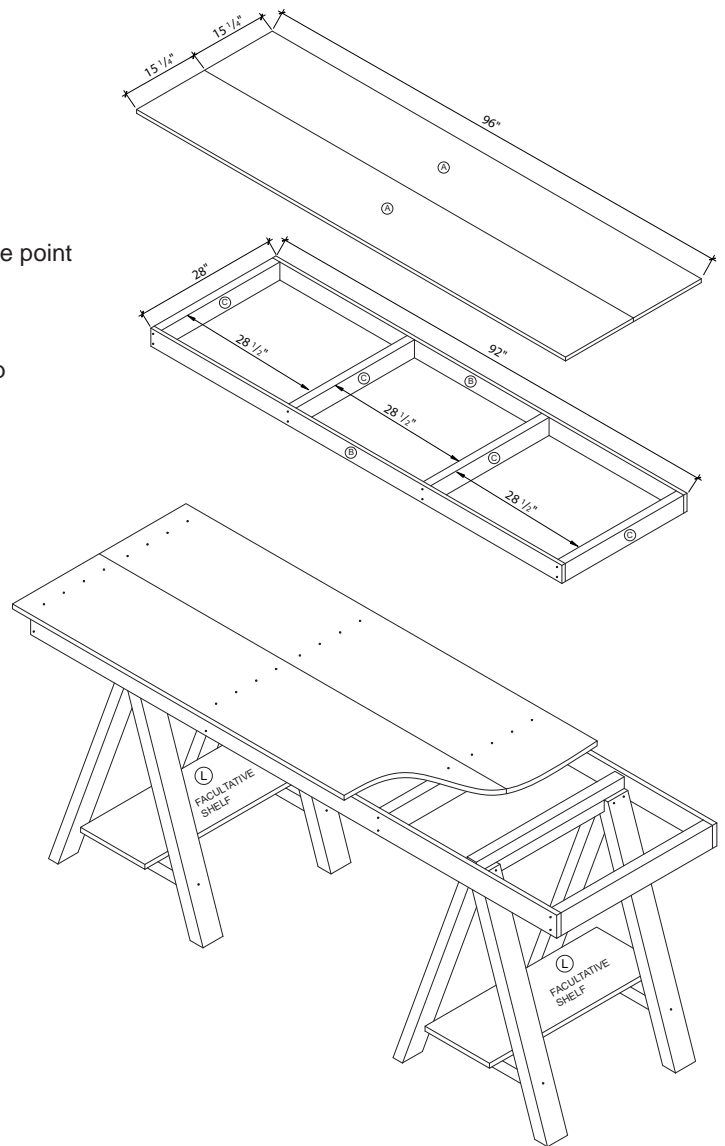
### TABLE TOP

- 9 Build a frame by screwing two boards B into the ends of two pieces C. Screw the remaining two pieces C inside this frame, equally spaced, i.e.  $28 \frac{5}{8}$ " apart. Mark the centre point of the 4 pieces C, i.e.  $15 \frac{1}{4}$ " from the edge.
- 10 Using the marks as a guide, centre the two boards A on top of the frame, side by side. They will overhang the edge of the frame by 2" on either side and by  $1 \frac{1}{2}$ " at either end. Screw into place.

**Assembly option:** If you would rather not drive screws through the table top, lay the top boards A flat, side by side, and place the frame made from pieces B and C on top. Fasten together using metal brackets and short screws.

Simply place the table and its frame over the 2 trestles. Position the trestles about 14" inside the frame.

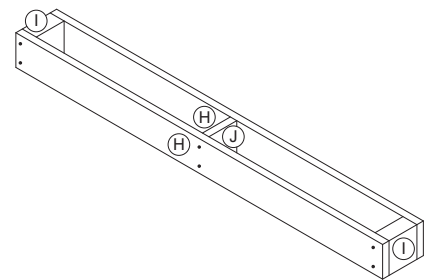
Lay the optional shelves L over the trestle stretchers G.



### STORAGE BOX

The storage box measures  $4 \frac{1}{2}$ " by  $42 \frac{3}{4}$ ".

- 11 Build a frame by screwing the sides of the box H into the ends I.
- 12 Screw the divider J in the very centre of the box.
- 13 Fasten the bottom of the box K to the frame.



### FINISHING

- 14 Conceal the holes by filling them with wood putty, then sand.
- 15 Apply an undercoat of primer, followed by a topcoat of paint.

