

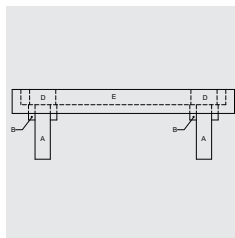
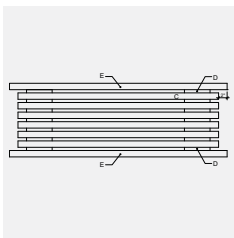
# GARDEN BENCH

## CONSTRUCTION PLAN



Difficulty level: **T** | EASY

Completion time: **4 hours**



# GARDEN BENCH

A bench that has many characteristics: sturdy, inexpensive, practical and easy to build.

This bench is built entirely of treated wood, making it weather resistant.



## TOOLS AND MATERIALS NEEDED

### TOOLS

- > Circular saw
- > Drill (electric or cordless)
- > Tape measure
- > Square
- > Pencil

### MATERIALS

- > 1 post, 4" X 4" x 96"
- > 1 part, 2" X 6" x 108"
- > 4 parts, 2" X 4" x 96"
- > 1 part, 1" X 4" x 96"
- > Treated wood screws 2"

## BEFORE ASSEMBLY

### CUTTING LIST

Clearly identify each part with the corresponding letter before assembling.

Sand all the surfaces of the parts, including the edges to prevent splinters.

This bench is painted. It is easier and recommended to paint all the parts before assembly, in order to cover the entire area of the parts, especially the ends.

#### Post, 4" x 4" x 96"

PIECES	QUANTITY	LENGTH (")
A LEG	4	12 1/2

#### Part, 2" x 4" x 96"

PIECES	QUANTITY	LENGTH (")
B SUPPORT	4	14 1/4
C TOP	6	47

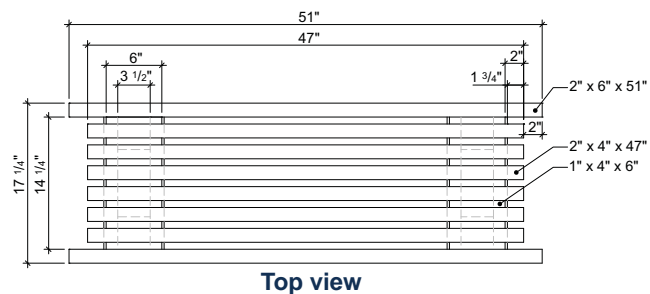
#### Part, 1" X 4" x 96"

PIECES	QUANTITY	LENGTH (")
D DIVIDER	14	6

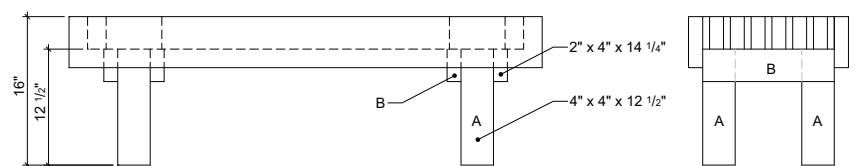
#### Part, 2" x 6" x 108"

PIECES	QUANTITY	LENGTH (")
E CONTOUR	2	51

## ELEVATIONS



Top view



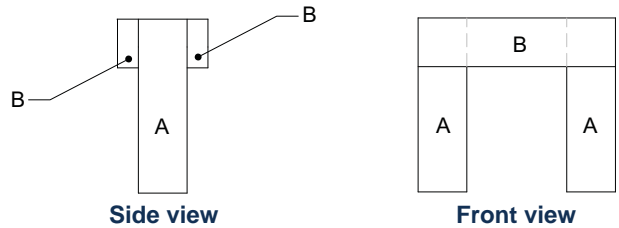
Front view

Side view

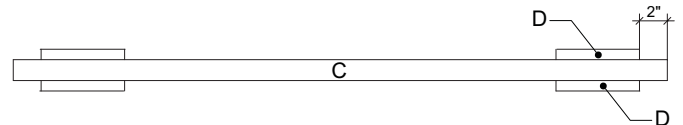
# GARDEN BENCH

## ASSEMBLY

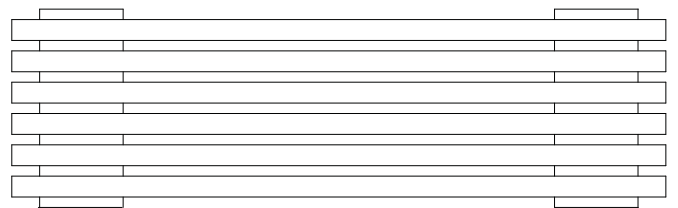
**1** Screw two A parts (legs), sandwiching them between two B parts (supports) by making the top of A level with the edges of B. Repeat this assembly to make the two sections that form the bench legs.



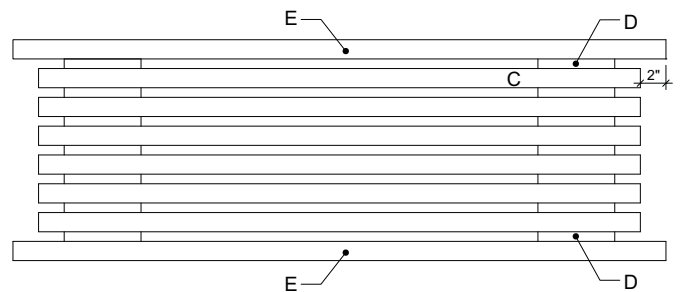
**2** Screw two D parts (dividers) 2" from each end of a C part (seat), and on each side of it.



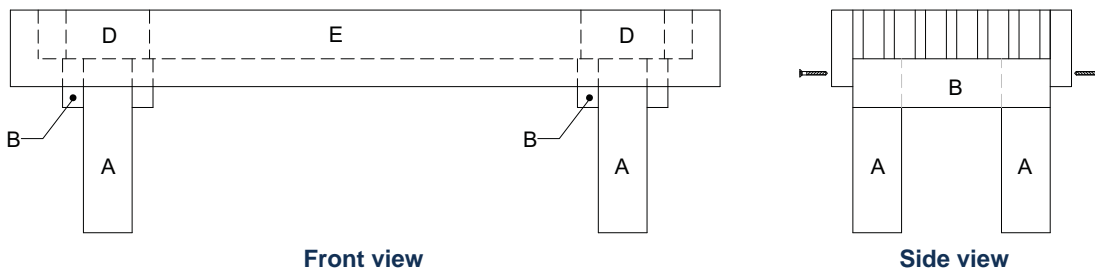
**3** Screw by alternating the D parts (dividers) and the C parts (seat). Finish with the D parts.



**4** Screw the two E parts (edges) to part D on each side of the previous assembly.



**5** Insert the legs under the seat, opposite the D parts, and screw them from the side (through the E parts).



If possible, place the bench on a well drained surface, avoiding direct contact of the legs with earth or grass, like on a slab of concrete or gravel for example. Although it is made of treated wood, you will prolong the life of the bench by avoiding resting it directly on wet ground.