

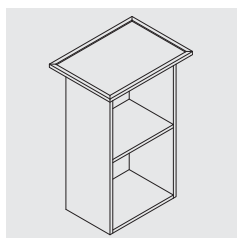
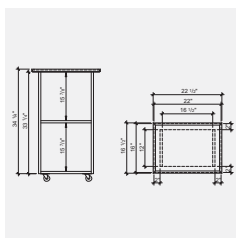
SERVICE CART

CONSTRUCTION PLAN



Difficulty level: **T** | EASY

Completion time: **8 hours**



SERVICE CART

With this stylish rolling service cart, you'll always have everything close to hand in the bathroom, within easy reach of the bathtub, shower or sink.

This service cart, made from $\frac{3}{4}$ " MDF, measures 34 $\frac{1}{4}$ " high. The top, covered with ceramic tile, measures 22 $\frac{1}{2}$ " x 16 $\frac{1}{2}$ ".

Delicate moulding can be used to enhance the side panels of the cart. The smooth-gliding, silent casters are easily screwed on from underneath allowing to move it around.

With its tiled top to match the existing ceramic, the cart blends harmoniously with the bathroom decor.

Its handsome looks and versatility also make it a stylish addition to any other room of the house.



TOOLS AND MATERIALS NEEDED

TOOLS

- > Table saw
- > 120-grit sandpaper
- > Pencil
- > Square
- > Notched trowel
- > Grout float
- > Hammer or finishing nailer
- > $\frac{3}{8}$ " countersink drill bit
- > Screwdriver-drill (electric or cordless)
- > Measuring tape
- > Tile cutter

MATERIALS

- > 1 sheet MDF, $\frac{3}{4}$ " x 48" x 96"
- > 1 length moulding, $\frac{3}{4}$ " x $\frac{3}{4}$ " x 96"
- > 1 $\frac{1}{2}$ " No. 6 screws
- > Small finishing nails
- > 4 casters without brakes
- > Ceramic tiles
- > Ceramic tile adhesive
- > Ceramic tile grout
- > Grout sealer
- > Plastic spacers
- > Wood glue
- > Filler

SERVICE CART

BEFORE ASSEMBLY

CUTTING LIST

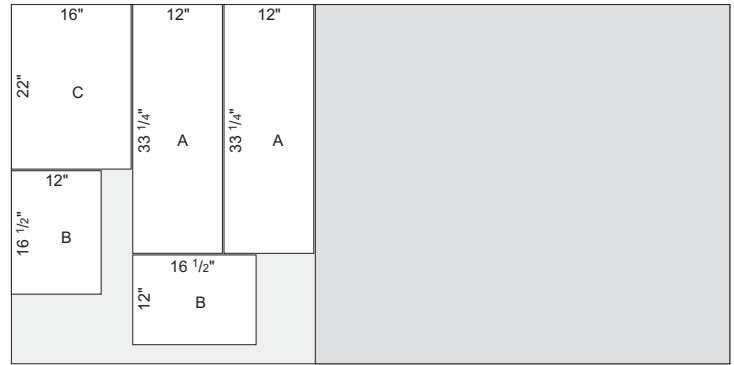
Mark each piece clearly with the corresponding letter before assembling. After cutting the pieces, sand the edges smooth as necessary.

MDF, 3/4" x 48" x 96"

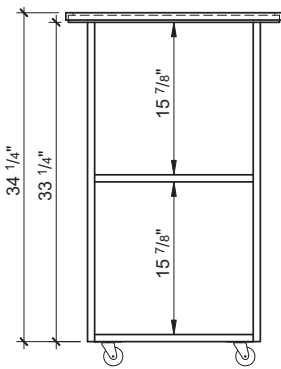
PIECES	QUANTITY	WIDTH (")	LENGTH (")
A SIDE	2	12	33 1/4
B BOTTOM / SHELF	2	12	16 1/2
C TOP	1	22	16

Moulding, 3/4" x 3/4" x 96"

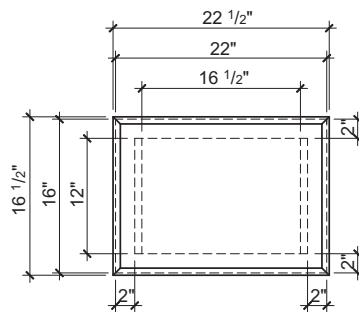
PIECES	QUANTITY	LENGTH (")	ANGLE (°)
D MOULDING	2	22 1/2	45
E MOULDING	2	16 1/2	45



ELEVATIONS



Front view

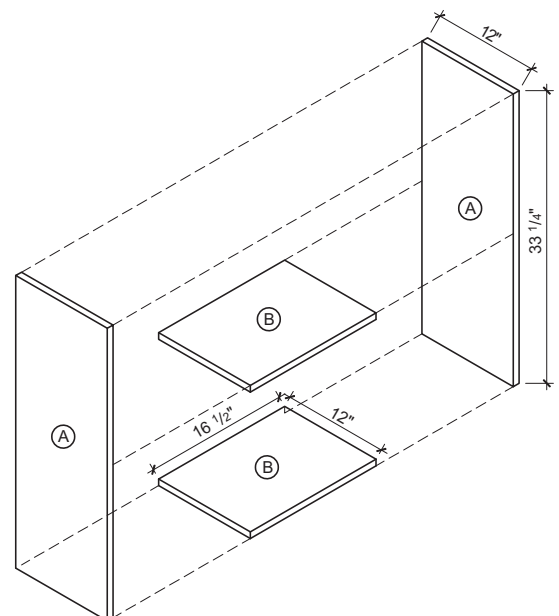


Top view

ASSEMBLY

Note: All the pieces of MDF are glued and screwed together. Always pre-drill holes in the MDF with a countersink bit before inserting the screws.

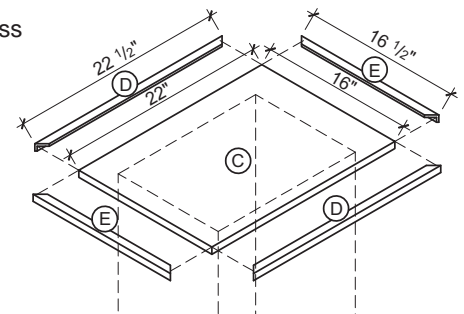
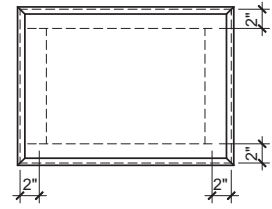
- 1 Make a mark 17 3/8" from the bottom of each side part A, on both sides of each part.
- 2 Glue and screw bottom B between sides A.
- 3 Align the top surface of shelf B with the marks made previously at 17 3/8" on each side A. Glue and fasten in place with screws.



SERVICE CART

ASSEMBLY (CONT'D)

- 4 On both sides of top C, draw a rectangle 2" in from the edges.
- 5 Apply glue to the top edge of both sides A.
- 6 Using the rectangle as a guide, position top C on top of the structure and screw into place.
- 7 Glue mouldings D and E to the edges of C, leaving a gap equivalent to the thickness of the tiles, plus two millimetres. Nail the moulding in with finishing nails.
- 8 Lay the tiles over top C, covering the entire surface and using the spacers as a guide. Cut the tiles as required.
- 9 Now remove the tiles and spread ceramic adhesive over top C using the notched trowel.
- 10 Lay the tiles back on top, twisting each one a little to work it into the adhesive. Use the spacers once again to ensure correct positioning, removing them once you have laid all the tiles. Leave the adhesive to set for 24 hours.
- 11 Dampen the tiles slightly with a sponge and apply the grout with the float. Remove the excess grout with a sponge. Leave to dry for another 24 hours, then wipe clean.
- 12 Protect the tiled surface from moisture damage by applying grout sealer.



FINISHING

You can personalize the cart as you like by adding $\frac{3}{4}$ " moulding to the vertical edges and/or creating panels or decorative designs on the sides.

Fill the screw and nail holes with filler. Sand and paint the cart.

Mount the four casters on the underside of the cart at each corner.

