

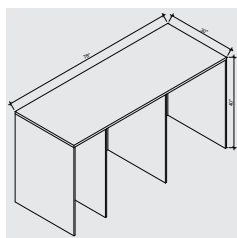
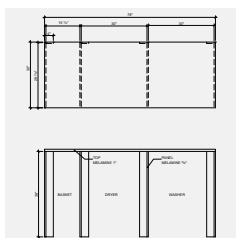
WORK COUNTER

CONSTRUCTION PLAN



Difficulty level: **T | EASY**

Completion time: **4 hours**



WORK COUNTER

Make the best use of the space in the laundry room by building a counter above the washer and dryer.

Installed above a front-loading washer and dryer, this counter is perfect for folding and ironing laundry. Made of white melamine, it is simple to build and, above all, easy to maintain. There is a space on the side where you can slide in a rolling laundry cart, increasing the storage space. You can always insert shelves or even eliminate this section if space is more restricted.

Before taking on this project, measure your appliances and adjust the plan accordingly. Please note that this counter must be secured to the wall.



TOOLS AND MATERIALS NEEDED

TOOLS

- > Bench saw or circular saw equipped with a cutting guide
- > Drill with $\frac{1}{8}$ " bit
- > Drill and countersink
- > Wood file
- > Measuring tape
- > Square
- > Iron
- > Pencil

MATERIALS

- > 1 $\frac{1}{2}$ sheets of $\frac{5}{8}$ " white melamine, 48" x 96"
- > 1 sheet of 1" white melamine, 48" x 96"
- > Sandpaper - 150 grain
- > Flathead screw No. 6, 1 $\frac{3}{4}$ "
- > Flathead screw No. 8, $\frac{1}{2}$ "
- > Angle brackets
- > Edge banding, white melamine finish

WORK COUNTER

BEFORE ASSEMBLY

CUTTING LIST

Before assembling the pieces, mark them with the corresponding letter. Next, using the iron, glue the melamine edge banding on the edges that will show and use the wood file to remove the excess.

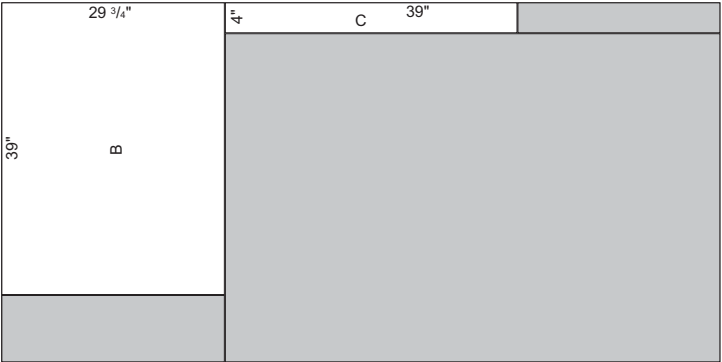
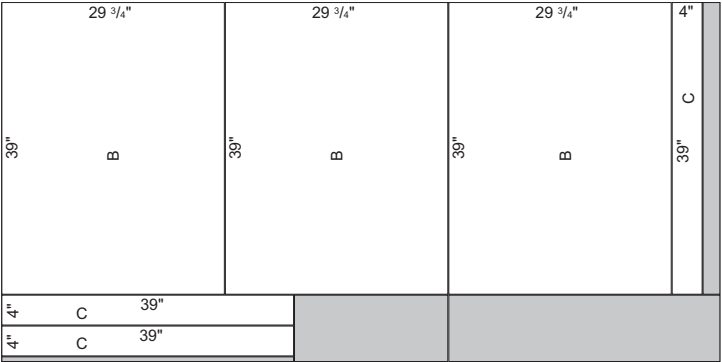
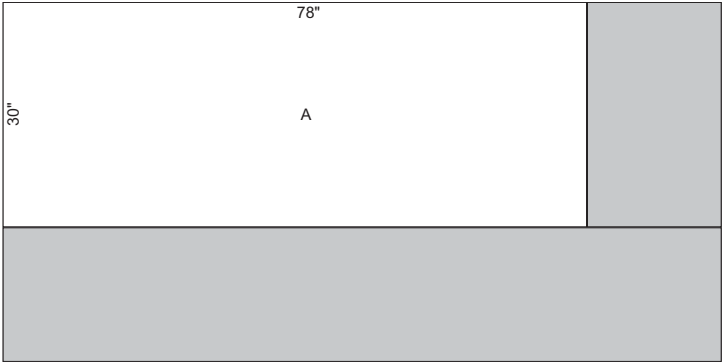
Melamine, 1" x 48" x 96"

PIECES	QUANTITY	WIDTH (")	LENGTH (")
A TOP	1	78	30

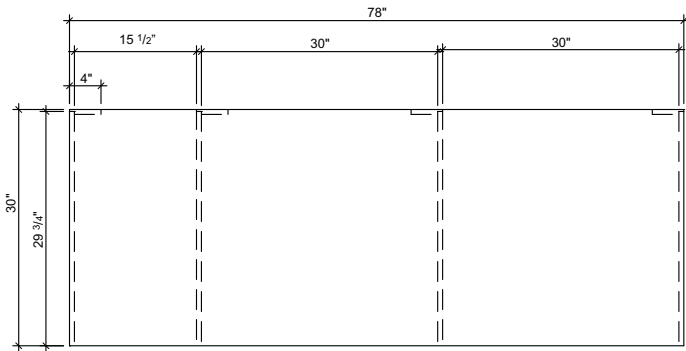
Melamine, 5/8" x 48" x 96"

PIECES	QUANTITY	WIDTH (")	LENGTH (")
B PANEL	4	29 3/4	39
C SUPPORT	4	14	39

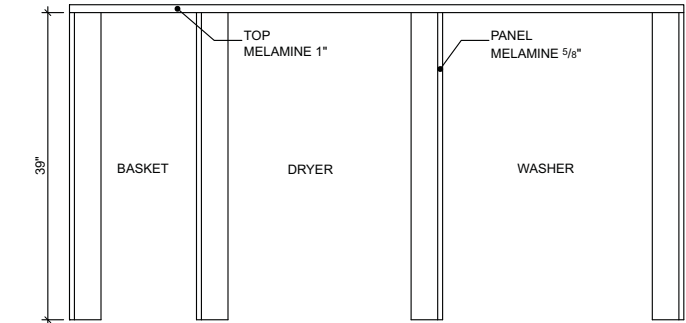
Note: These measurements are only a guideline; please adjust them according to the dimensions of your appliances.



ELEVATIONS



Top view



Front view

WORK COUNTER

ASSEMBLY

- 1
 - a) Attach supports C to panels B as shown, using brackets and $\frac{1}{2}$ " screws.
 - b) Measure the width of each of your appliances and add $\frac{3}{4}$ of an inch. This measurement is the space that you must leave between the panels B.
 - c) Attach top A to panels B with the brackets, following the measurements above.
 - d) Make sure that panels B are vertically level, then screw supports C into the wall using the $1 \frac{3}{4}$ " screws.

