

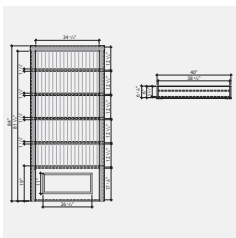
CHINA CABINET

CONSTRUCTION PLAN



Difficulty level: TT | MODERATE

Completion time: 8 hours



CHINA CABINET

Put your prettiest china on display in this classic-style open cabinet.

Measuring 40" wide by 84" high, this open display cabinet will enhance the look of your dining room without taking up too much space, as it is only 6 1/4" deep. The back is made from MDF beadboard, and a "cove" type moulding is used to hold plates in position.

Once the pieces are cut, the cabinet is relatively easy to assemble using screws for the main components and nails for the finishing trim. Important note: all pieces to be screwed or nailed should also be glued in place first. Always pre-drill holes before driving screws, except in the case of the brackets.



TOOLS AND MATERIALS NEEDED

TOOLS

- > Circular saw
- > Sliding mitre saw
- > Table saw
- > Hammer or air nailer
- > Screwdriver-drill (electric or cordless)
- > Countersink drill bit for No. 6 screws
- > Drill bit 3/64" (1.2 mm) if nailing with hammer
- > Measuring tape
- > Pencil

MATERIALS

- > 1 sheet MDF, 48" x 96" x 5/8"
- > 1 decorative panel HDF "Universal", 48" x 96" x 1/4" (No. 8914045)
- > Angle brackets, 1" x 1" x 1 3/4"
- > 5/8" No. 8 screws
- > Wood glue
- > 1 1/4" 18-gauge nails
- > 3 casing mouldings, 2 3/4" x 96" x 1/2" (Boulanger No. 09566127)
- > 2 rosettes, 3" x 3" x 7/8" (Boulanger No. 09565916)
- > 1 screen moulding, 3/4" x 5/16" x 96" (Boulanger No. 09565000)
- > 2 cove mouldings, 7/16" x 7/16" x 96" (Boulanger No. 09565017)
- > Filler
- > RONA paint

CHINA CABINET

BEFORE ASSEMBLY

CUTTING LIST

Mark each piece clearly with the corresponding letter before assembling. Apply two coats of paint (or one primer coat and one paint coat) to all parts after they have been cut.

MDF, 5/8" x 48" x 96"

PIECES	QUANTITY	WIDTH (")	LENGTH (")
A SIDE	2	6	84
B TOP	1	6	38 3/4
C SHELF	6	5 3/8	38 3/4
D FACADE - SHELF	4	1 1/4	38 3/4
E FACADE	1	19	38 3/4

Decorative HDF, 1/4" x 48" x 96"

PIECES	QUANTITY	WIDTH (")	LENGTH (")
F BACK	1	40	84

Casing moulding 2 3/4"

PIECES	QUANTITY	LENGTH (")
G MOULDING - SIDE	2	81 1/8
H MOULDING - TOP	1	34 1/4

Rosette

PIECES	QUANTITY	LENGTH (")
I ROSETTE - CORNER	2	3

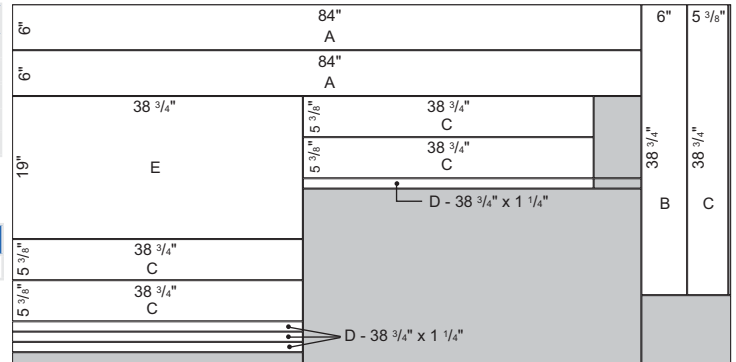
Cove 7/16"

PIECES	QUANTITY	LENGTH (")
J MOULDING - SHELF	5	38 3/4

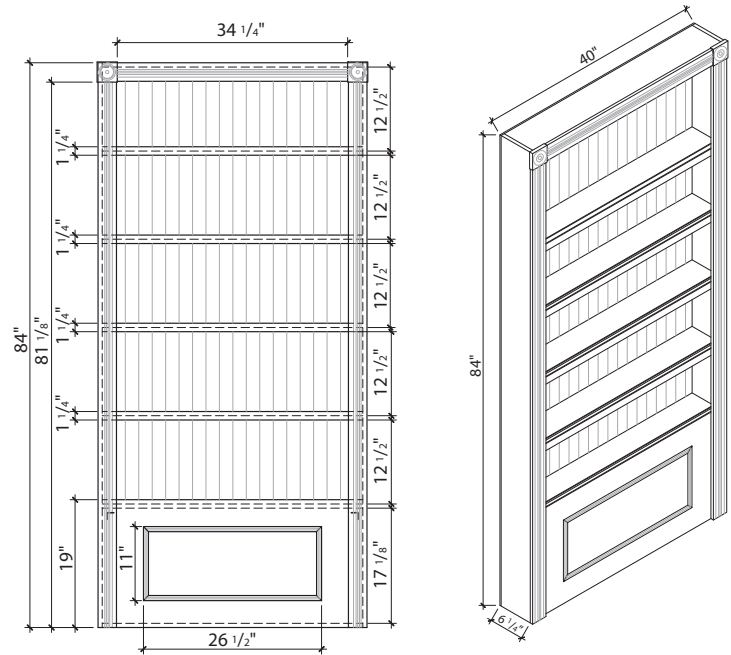
Screen moulding 3/4"

PIECES	QUANTITY	LENGTH (")
K MOULDING - PANEL - HORIZONTAL	2	26 1/2
L MOULDING - PANEL - VERTICAL	2	11

The screen mouldings should be cut at a 45° angle.



ELEVATIONS



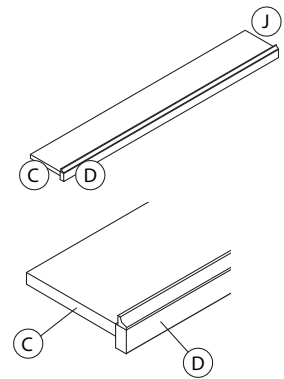
Front view

Top view

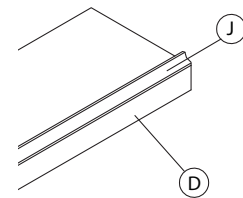
CHINA CABINET

ASSEMBLY

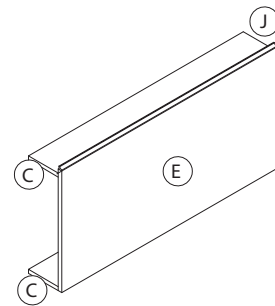
- 1 Glue facades D onto the front of 4 shelves C using wood glue. The top edge of the facade should be flush with the top of the shelf. Then clamp the pieces to hold them in position while you nail them together, either by hand (in which case pre-drill the holes) or with an air nailer, using 18-gauge nails. Three or four nails should be sufficient.



- 2 Next, glue coves J along the top of the facades, with the concave side facing outwards, and nail them in place (3 or 4 nails).



- 3 Fasten the two remaining shelves C to facade E using brackets. The upper and lower edges of E should be flush with the shelves C.



- 4 Glue a cove J to the top edge of facade E, with the concave side facing outwards, and nail in place.

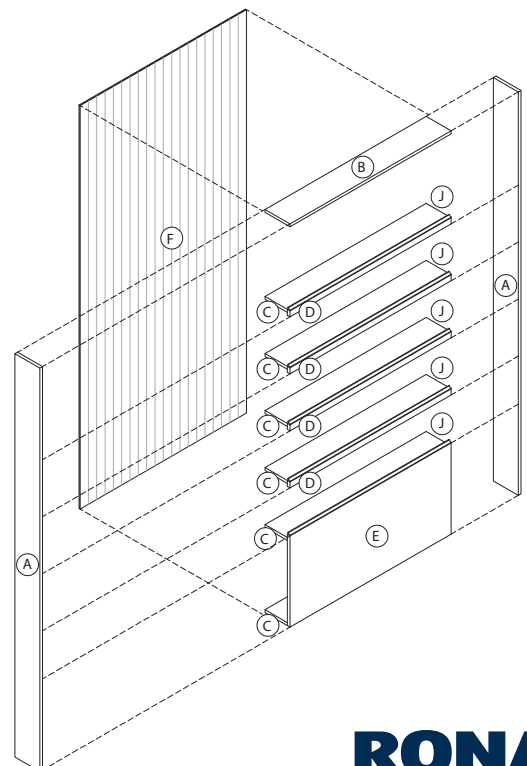
- 5 Fasten sides A to each side of the previously assembled structure, screwing them from the outside.

- 6 Screw top B between the top ends of sides A.

- 7 Screw shelves C below top B, spacing them every 12 1/2".

- 8 Turn the cabinet over and lay it on the ground with facade E face down.

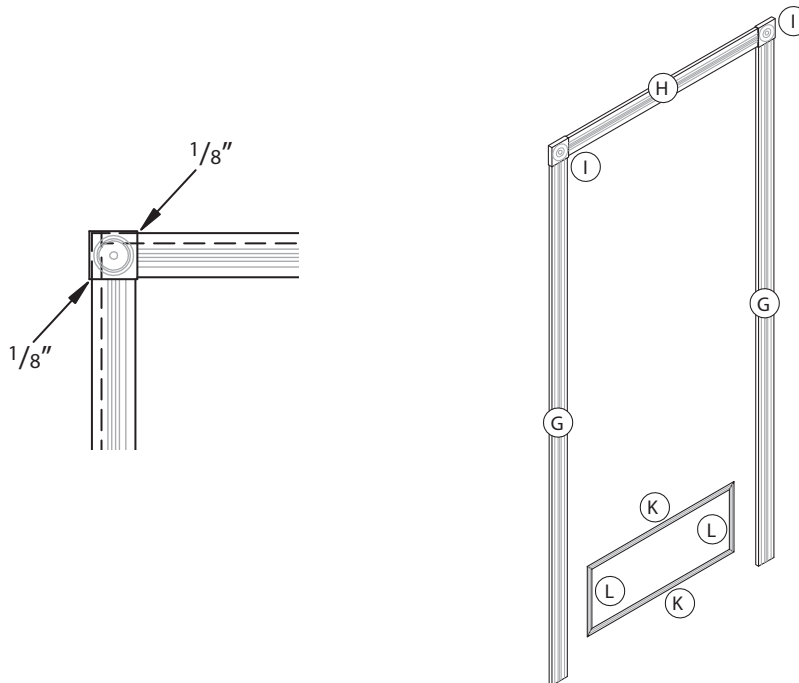
- 9 Nail back F onto the cabinet.



CHINA CABINET

FINISHING

The rosettes and screen mouldings are glued into place, whereas the casing mouldings are nailed.



- 10 Turn the cabinet onto its back.
- 11 Fasten casing mouldings G to the sides. The edges should be flush with the outside edges of the cabinet.
- 12 Affix rosettes I. These should overlap the outside edges of the structure by $\frac{1}{8}$ ". Since they are only glued on, you can easily adjust their position before the glue dries.
- 13 Install top moulding H.
- 14 Glue screen mouldings K and L onto facade E. The K pieces should be positioned 4" from the top and bottom edges of E, and the L pieces should be 4" from the side casings G.
- 15 Patch all holes with filler, and sand if necessary.
- 16 Apply a final coat of paint.