

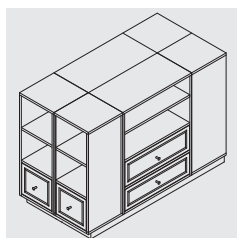
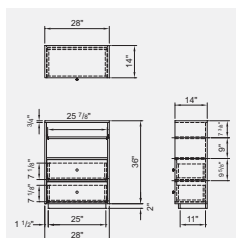
WALK-IN ISLAND

CONSTRUCTION PLAN



Difficulty level: **TT | MODERATE**

Completion time: **8 hours**



WALK-IN ISLAND

Modular furniture for storage, made to measure in your walk-in.

This modular storage cabinet, made up of modules, can be assembled as required in the available space in the walk-in. In this document, we showcase versions of three and six modules.

Joints between modules are then hidden with mouldings and a panel is added on top and skirted with an O'gee moulding which gives it the look of a built-in piece of furniture. Decorative mouldings are also affixed to the front of the drawers and then, the entire unit may be enhanced with the addition of trim around the toe-kick of the cabinet (not shown).



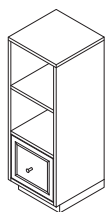
TOOLS AND MATERIALS NEEDED

TOOLS

- > Benchsaw or circular saw equipped with a guide block
- > Electric drill (plug in or portable)
- > Depth stop for $\frac{1}{8}$ " and $\frac{3}{8}$ " drill bits
- > Finishing nail gun (optional)
- > Tape measure
- > Angle
- > Pencil
- > Sander

SMALL MODULE

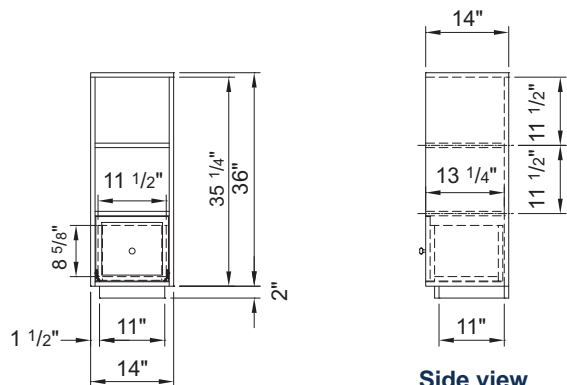
MATERIALS



- > 1 MDF sheet, $\frac{3}{4}$ " x 48" x 96"
- > 1 quarter round, $\frac{7}{16}$ " x $\frac{7}{16}$ " x 96", Boulanger brand
- > No.6 flat head wood screws
- > $\frac{5}{8}$ " flat head wood screws
- > 1 squared wood piece, $\frac{3}{4}$ " x $\frac{3}{4}$ " x 72"
- > Wood glue
- > Ultra fine sandpaper sponge block
- > 150 grain sandpaper
- > 2 shelf runners, full expansion, 12", Richelieu brand
- > 1 package of 5 mm shelf brackets, Richelieu brand, model BP340011
- > 1 Richelieu brand handle, model BP904195

ELEVATIONS

Important: as you cut the pieces, make sure you identify them with the corresponding number as well as a letter identifying the module to which it belongs (for ex.: S for Small module).



Front view

Side view

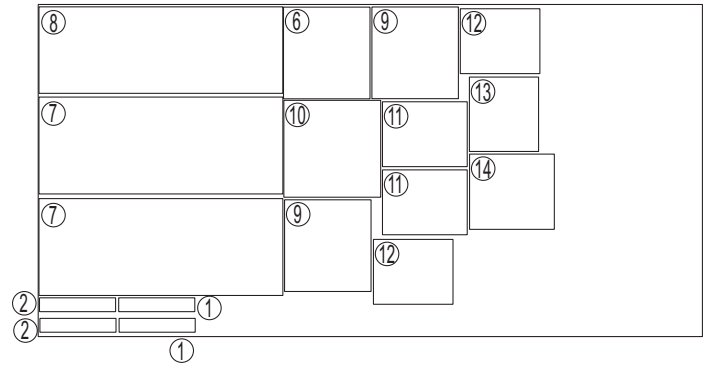
WALK-IN ISLAND

SMALL MODULE CONT'D

CUTTING LIST

MDF, 3/4" x 48" x 96"

PIECES	QUANTITY	WIDTH (")	LENGTH (")
1 BASE (SIDES)	2	2	11
2 BASE (FRONT AND BACK)	2	2	11
6 BOTTOM	1	12 1/2	13 1/4
7 SIDE	2	14	35 1/4
8 BACK	1	12 1/2	35 1/4
9 SHELVES	2	12 1/2	13 1/4
10 TOP	1	14	14
11 DRAWER (SIDES)	2	12 1/4	9 3/8
12 DRAWER (FRONT AND BACK)	2	11 1/2	9 3/8
13 DRAWER (BOTTOM)	1	10	10 3/4
14 DRAWER (FRONT COVER)	1	12 1/4	10 7/8



Squared wood, 3/4" x 3/4" x 72"

PIECES	QUANTITY	WIDTH (")	LENGTH (")
3 BOTTOM (VERTICAL PARTS)	4	3/4	2
4 BOTTOM (FRONT AND BACK)	2	3/4	9
5 BOTTOM (SIDES)	2	3/4	9

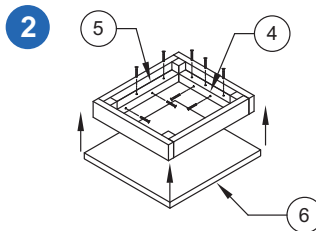
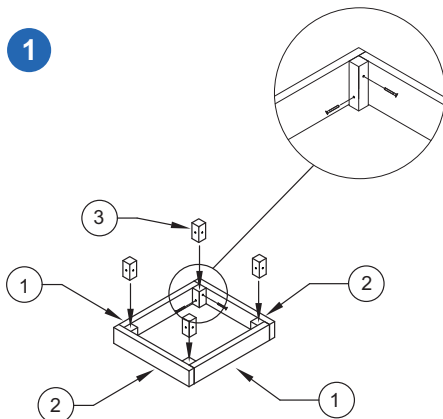


Decorative moulding quarter round No. 85290, 7/16" x 7/16" x 96"

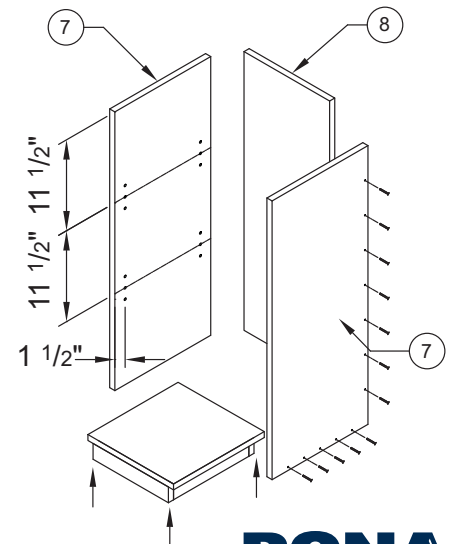
PIECES	QUANTITY	WIDTH (")	LENGTH (")
15 DRAWER (TOP PART)	1	7/16	10 1/4
16 DRAWER (BOTTOM PART)	1	7/16	10 1/4
17 DRAWER (LEFT PART)	1	7/16	8 7/8
18 DRAWER (RIGHT PART)	1	7/16	8 7/8



ASSEMBLY

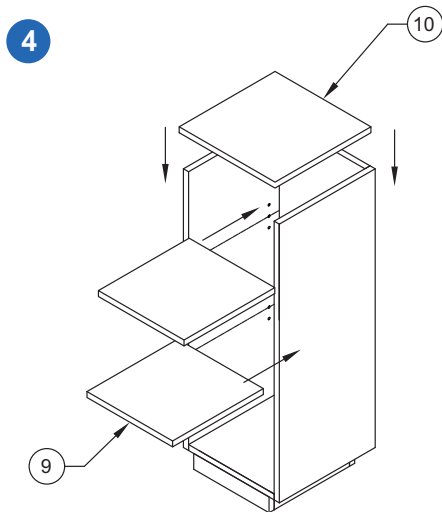


3 Pre-drill holes for the shelf supports.

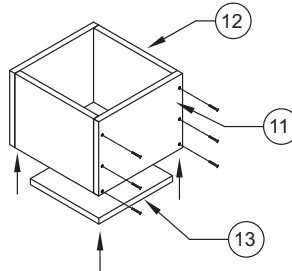


WALK-IN ISLAND

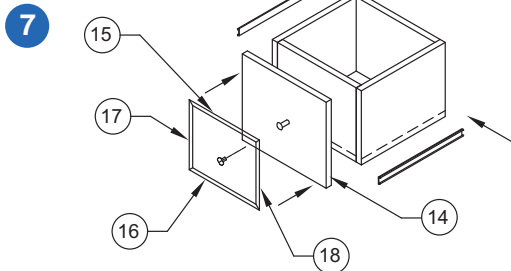
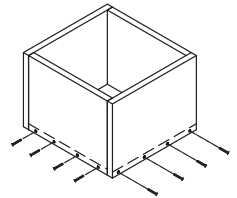
SMALL MODULE CONT'D



5 Drawer

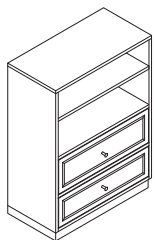


6



LARGE MODULE

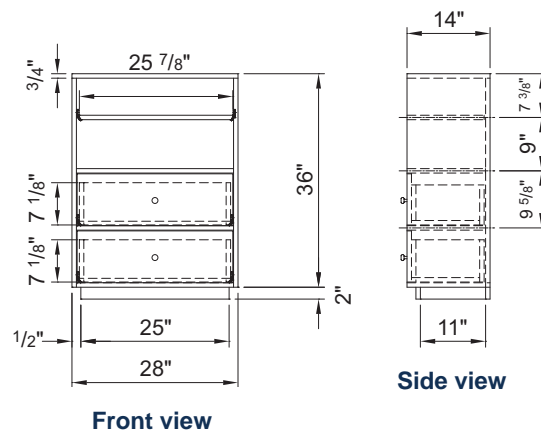
MATERIALS



- > 1 MDF sheet, $\frac{3}{4}$ " x 48" x 96"
- > 1 MDF sheet, $\frac{3}{4}$ " x 48" x 48"
- > 2 quarter rounds, $\frac{7}{16}$ " x $\frac{7}{16}$ " x 96", Boulanger brand
- > No.6 flat head wood screws
- > $\frac{5}{8}$ " flat head wood screws
- > 1 squared wood piece, $\frac{3}{4}$ " x $\frac{3}{4}$ " x 72"
- > Wood glue
- > Ultra fine sandpaper sponge block
- > 150 grain sandpaper
- > 6 shelf runners, full expansion, 12", Richelieu brand
- > 1 package of 5 mm shelf brackets, Richelieu brand, model BP340011
- > 2 Richelieu brand handles, model BP904195

ELEVATIONS

Important: as you cut the pieces, make sure you identify them with the corresponding number as well as a letter identifying the module to which it belongs (for ex.: L for Large module).



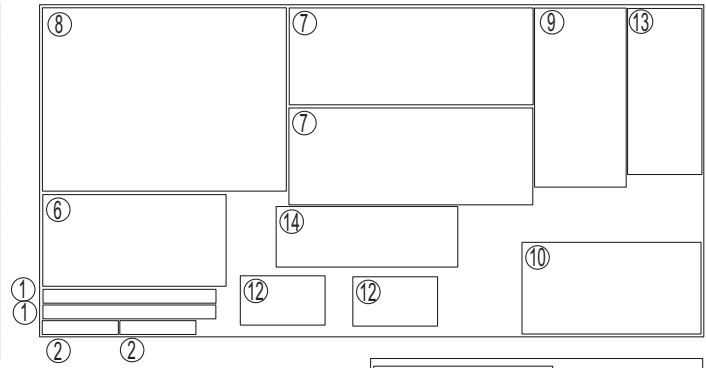
WALK-IN ISLAND

LARGE MODULE (CONT'D)

CUTTING LIST

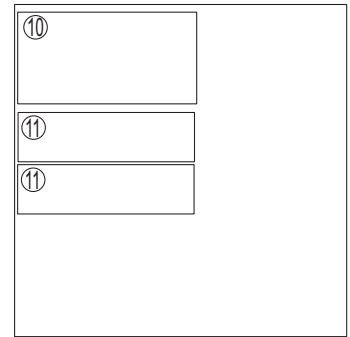
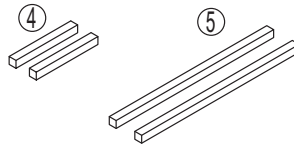
MDF, $\frac{3}{4}$ " x 48" x 96"

PIECES	QUANTITY	WIDTH (")	LENGTH (")
1 BASE (FRONT AND BACK)	2	2	11
2 BASE (SIDES)	2	2	11
6 BOTTOM	1	12 $\frac{1}{2}$	13 $\frac{1}{4}$
7 SIDE	2	14	35 $\frac{1}{4}$
8 BACK	1	12 $\frac{1}{2}$	35 $\frac{1}{4}$
9 PULL-OUT SHELF	1	12 $\frac{1}{2}$	13 $\frac{1}{4}$
10 SHELF	2	14	14
11 DRAWER (FRONT AND BACK)	2	12 $\frac{1}{4}$	9 $\frac{3}{8}$
12 DRAWER (SIDES)	2	11 $\frac{1}{2}$	9 $\frac{3}{8}$
13 DRAWER (BOTTOM)	1	10	10 $\frac{3}{4}$
14 DRAWER (BOTTOM)	1	12 $\frac{1}{4}$	10 $\frac{7}{8}$



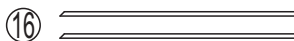
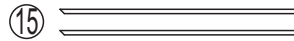
Squared wood, $\frac{3}{4}$ " x $\frac{3}{4}$ " x 72"

PIECES	QUANTITY	WIDTH (")	LENGTH (")
3 BOTTOM (VERTICAL PARTS)	4	$\frac{3}{4}$	2
4 BOTTOM (FRONT AND BACK)	2	$\frac{3}{4}$	9
5 BOTTOM (SIDES)	2	$\frac{3}{4}$	23

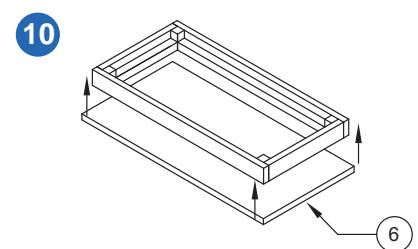
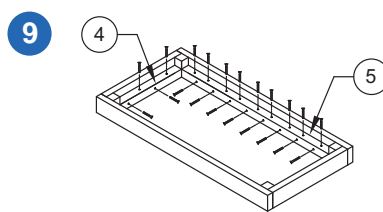
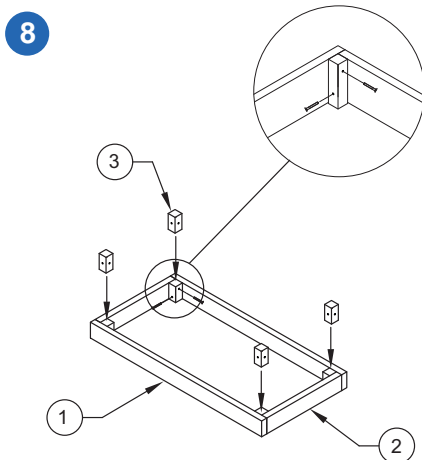


Decorative moulding quarter round No. 85290, $\frac{7}{16}$ " x $\frac{7}{16}$ " x 96"

PIECES	QUANTITY	WIDTH (")	LENGTH (")
15 DRAWER (TOP PART)	2	$\frac{7}{16}$	24 $\frac{1}{4}$
16 DRAWER (BOTTOM PART)	2	$\frac{7}{16}$	24 $\frac{1}{4}$
17 DRAWER (LEFT PART)	2	$\frac{7}{16}$	6 $\frac{3}{4}$
18 DRAWER (RIGHT PART)	2	$\frac{7}{16}$	6 $\frac{3}{4}$



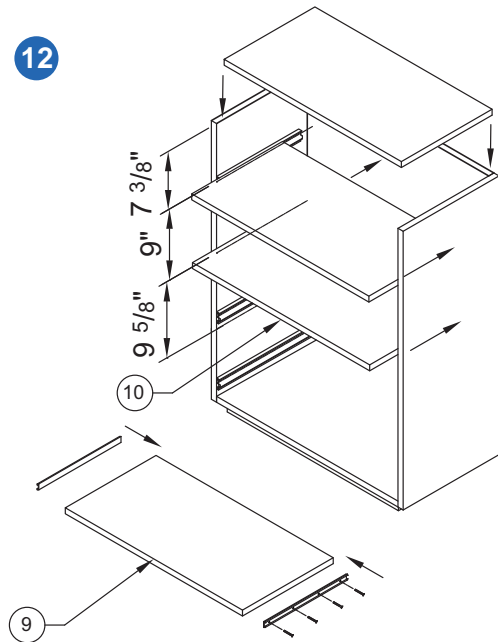
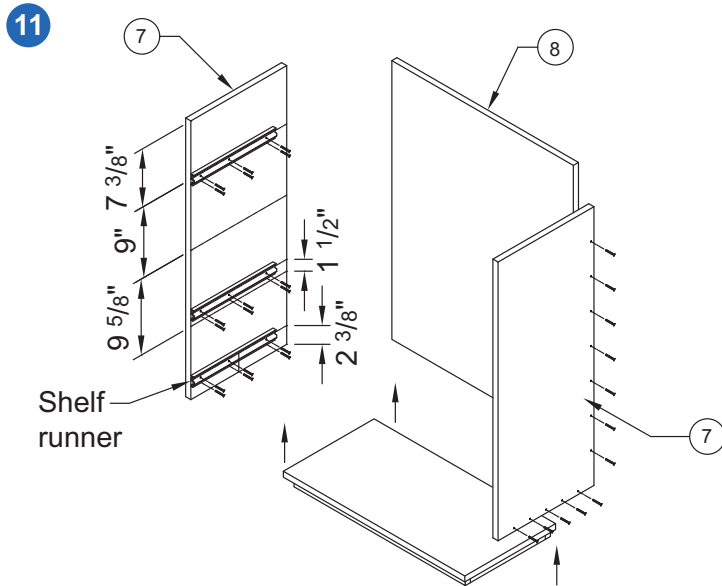
ASSEMBLY



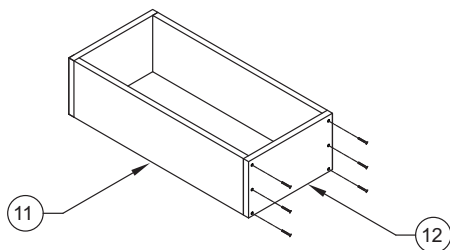
WALK-IN ISLAND

LARGE MODULE (CONT'D)

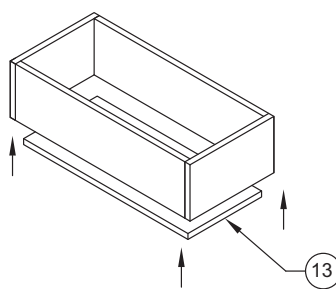
ASSEMBLY



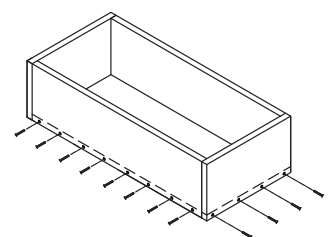
13 Drawer



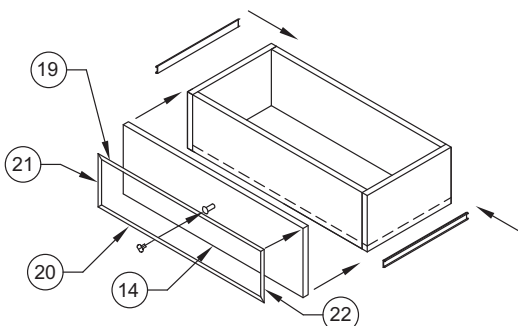
14



15



16

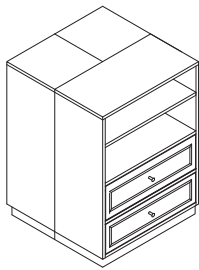


WALK-IN ISLAND

3 MODULES

MATERIALS

Note: materials hereafter are additional materials required for assembling the interacting modules so as to finish the cabinet; not for fabricating modules.



- > 1 MDF sheet, $\frac{3}{4}$ " x 48" x 48"
- > 2 jointed pine O'gee, $1\frac{1}{16}$ " x 4 $\frac{1}{2}$ " x 96"
- > No.6 flat head wood screws
- > $\frac{5}{8}$ " flat head wood screws
- > 1 squared wood piece 1" x 1" x 96"
- > Wood glue
- > Ultra fine sandpaper sponge block
- > 150 grain sandpaper

CUTTING LIST

MDF, $\frac{3}{4}$ " x 48" x 48"

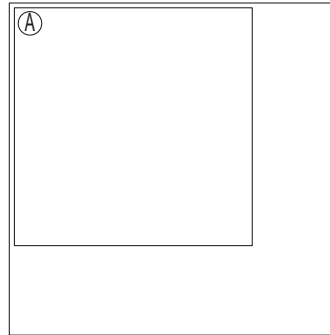
PIECES	QUANTITY	WIDTH (")	LENGTH (")
A TOP	1	34 $\frac{3}{8}$	34 $\frac{3}{8}$

Decorative moulding - O'gee, $1\frac{1}{16}$ " x 4 $\frac{1}{2}$ " x 96"

PIECES	QUANTITY	WIDTH (")	LENGTH (")
C FRONT, REAR AND SIDE		4 $\frac{1}{2}$	base 28

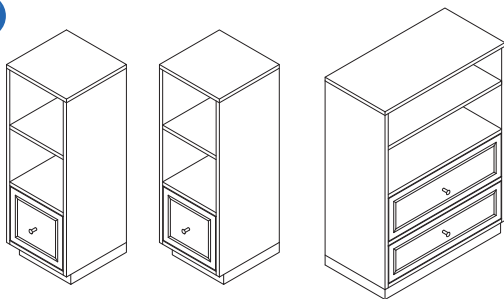
Squared wood, 1" x 1" x 96"

PIECES	QUANTITY	WIDTH (")	LENGTH (")
B SIDE		1	28

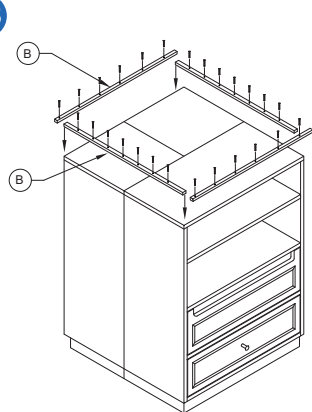


ASSEMBLY

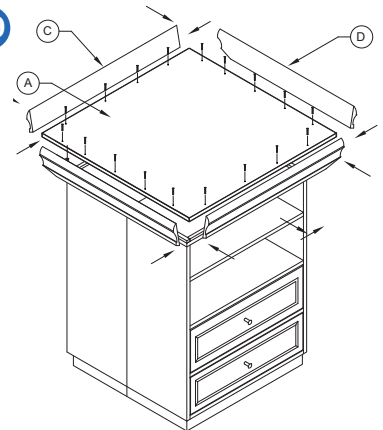
17



18



19



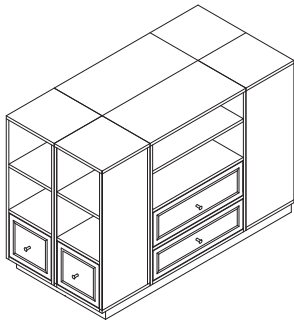
Note : Modules must be screwed together from the inside, before the installation of the top panel. A piece of trim or thin strip of plywood may be installed on the toe-kick for a better finish. Along the same lines, the joints between the modules may be concealed with mouldings.

WALK-IN ISLAND

6 MODULES

MATERIALS

Note: materials hereafter are additional materials required for assembling the interacting modules so as to finish the cabinet; not for fabricating modules.



- > 1 MDF sheet, $\frac{3}{4}$ " x 48" x 96"
- > 2 jointed pine O'gee, $\frac{11}{16}$ " x 4 $\frac{1}{2}$ " x 96"
- > No.6 flat head wood screws
- > $\frac{5}{8}$ " flat head wood screws
- > 1 squared wood piece 1" x 1" x 96"
- > Wood glue
- > Ultra fine sandpaper sponge block
- > 150 grain sandpaper

CUTTING LIST

MDF, $\frac{3}{4}$ " x 48" x 96"

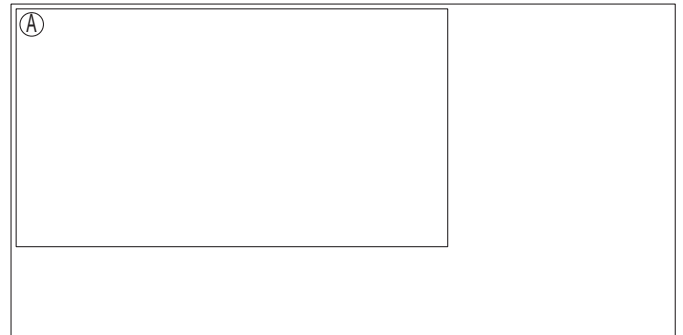
PIECES	QUANTITY	WIDTH (")	LENGTH (")
A TOP	1	62 $\frac{3}{8}$	34 $\frac{3}{8}$

Decorative moulding - O'gee, $\frac{11}{16}$ " x 4 $\frac{1}{2}$ " x 96"

PIECES	QUANTITY	WIDTH (")	LENGTH (")
D SIDE	2	4 $\frac{1}{2}$	base 28
E FRONT AND REAR	2	4 $\frac{1}{2}$	base 56

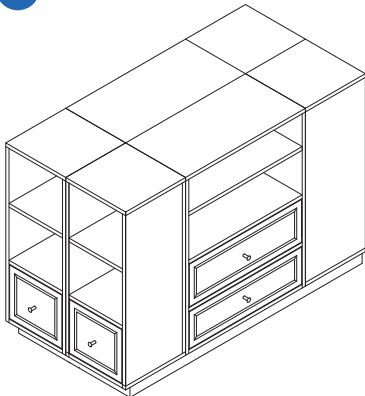
Squared wood, 1" x 1" x 96"

PIECES	QUANTITY	WIDTH (")	LENGTH (")
B SIDE	2	1	28
C FRONT AND REAR	2	1	56

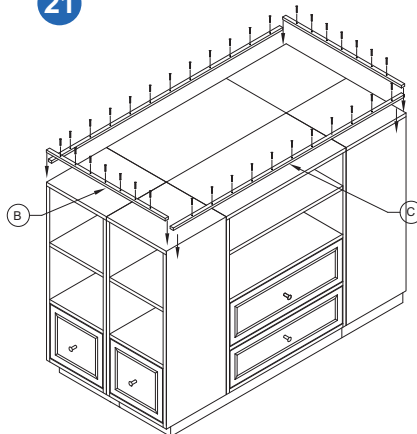


ASSEMBLY

20



21



22

