

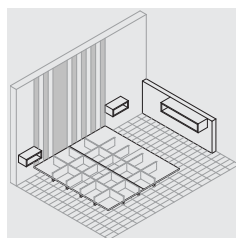
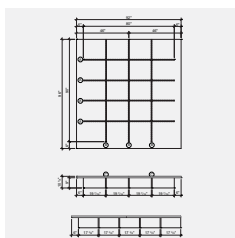
BED BASE, BEDSIDE TABLES AND CONSOLE

CONSTRUCTION PLAN



Difficulty level: **T** | EASY

Completion time: **Less than 8 hours**



BED BASE

The bed should be assembled in the room, which should be emptied beforehand to ensure enough space for movement. Boxes that form the bedside tables and console can be built outside the room.

A sturdy bed platform is created by gluing and screwing two layers of MDF $\frac{5}{8}$ " together.



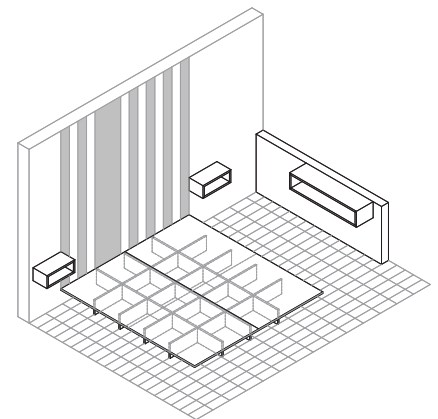
TOOLS AND MATERIALS NEEDED

TOOLS

- > Circular Saw
- > Mitre Saw
- > Bench saw
- > Drill - screwdriver
- > $\frac{3}{8}$ " countersink drill bit for No. 8 screws
- > Measuring tape
- > Square
- > Pencil

MATERIALS

- > 4 sheets of MDF 48" x 96" x $\frac{5}{8}$ "
- > 2 sheets of MDF 48" x 96" x $\frac{3}{4}$ "
- > Edge banding, white melamine finish
- > 1" No. 8 screws
- > $\frac{5}{8}$ " No. 8 screws
- > Angel brackets 1" x 1" x $\frac{3}{4}$ "
- > Wood glue (carpenter's glue)
- > Paint, «Pure White» by RONA, No 235-11



BEFORE ASSEMBLY

CUTTING LIST

Sand the edges of the cut pieces, if needed.

MDF, $\frac{3}{4}$ " x 48" x 96"

PIECES	QUANTITY	WIDTH (")	LENGTH (")
A STIFFENERS	4	9 $\frac{1}{8}$	80
B STIFFENERS	3	9 $\frac{1}{8}$	90

MDF, $\frac{5}{8}$ " x 48" x 96"

PIECES	QUANTITY	WIDTH (")	LENGTH (")
C TOP - LENGTHWISE	2	46	96
D TOP - WIDTHWISE	2	48	92

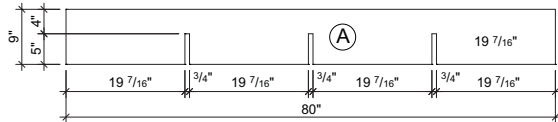
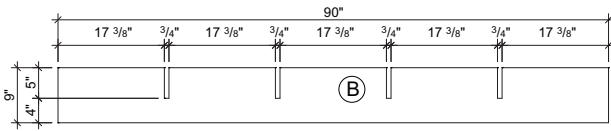
9 $\frac{1}{8}$ "	90"	B
9 $\frac{1}{8}$ "	90"	B
9 $\frac{1}{8}$ "	90"	B
9 $\frac{1}{8}$ "	80"	A
9 $\frac{1}{8}$ "	80"	A
9 $\frac{1}{8}$ "	80"	A
9 $\frac{1}{8}$ "	80"	A

BED BASE

BEFORE ASSEMBLY (CONT'D)

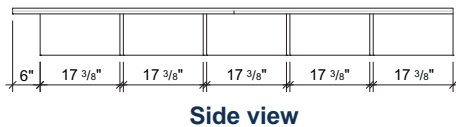
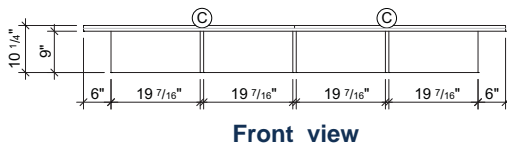
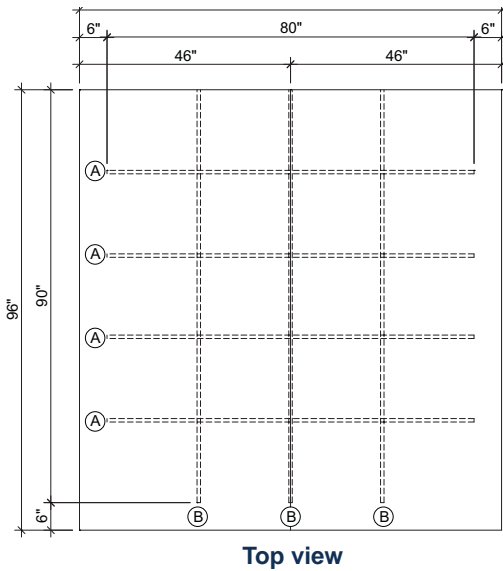
CUTTING

Make slots $\frac{3}{4}$ " wide and 5" deep in all A and B parts, as illustrated below, to allow for overlapping.



Apply a primer coat on the A and B parts, and then paint.

ELEVATIONS



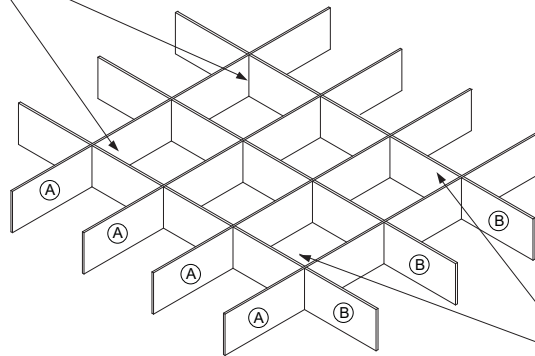
BED BASE

ASSEMBLY

FRAME

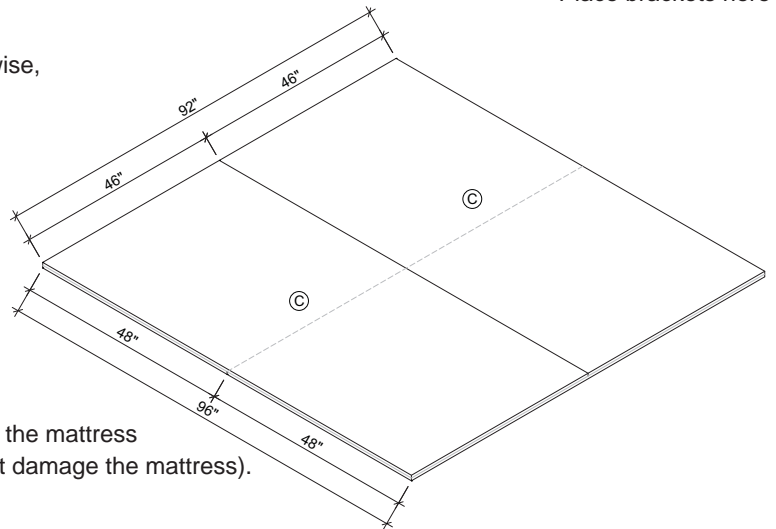
- 1 Insert parts A into parts B, and stabilize the frame by screwing brackets (with $\frac{5}{8}$ " screws) inside at least four of the squares, as illustrated. Press one end of the frame against the wall (the head of the bed).

Place brackets here



TOP

- 2 Lay a D part on the previous assembly (frame), widthwise, pressing it against the wall.
- 3 Place another D part side by side the previous one.
- 4 Apply wood glue all over the tops of the two parts.
- 5 Lay the C parts on the D parts, in the opposite direction (lengthwise).
- 6 Screw from above where the screws will be hidden by the mattress (countersink beforehand so that the screw heads don't damage the mattress).



- 7 Screw the rest of the surface from below, where access permits, so that the screws are not visible.

Another alternative, which helps screwing without the screw heads being visible:

If the ceiling is at least 8', you can assemble the platform on the floor. Screw the pieces from the top on all their surfaces (you should still glue them), and then vertically raise the assembly (the 96" side should lay on the floor with the screw heads pointing toward the inside of the room).

Lean the platform on the wall while you assemble the frame. When it is ready, slowly tip the platform on the frame (ask for help as it is heavy!), so that the screw heads are facing downwards. This procedure is difficult or impossible to perform if the ceiling is less than 8', as there is too little space to flip the platform.

- 8 Centre it on the frame (a distance of 6" separates the edge of the platform from the ends of the A and B parts, except on the wall side).
- 9 Screw the platform to the base with brackets.

FINISHING

- 10 Paint the platform.
- 11 Apply the edge banding around the perimeter of the C parts, to hide the seam.

BEDSIDE TABLES AND CONSOLE

TOOLS AND MATERIALS NEEDED

LIST OF MATERIALS FOR A CONSOLE AND TWO TABLES

- > 2 sheets of MDF, 48" x 96" x 5/8"
- > Edge banding
- > 1 3/4" No. 8 screws
- > Wood glue (carpenter's glue)
- > Paint «Pure White» by RONA, No 235-11 and «Turquoise» by RONA, No 043-42



BEFORE ASSEMBLY

CUTTING LIST

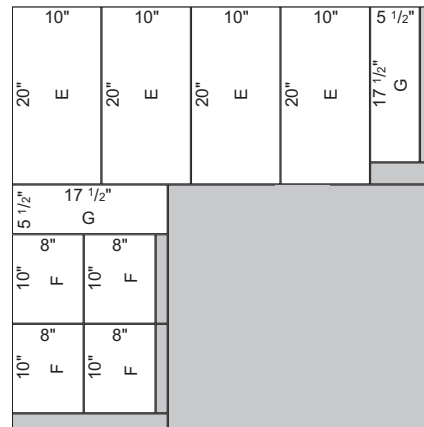
Cut both sheets of MDF in half, widthwise to get four 48" x 48" squares. Using wood glue, assemble squares two-by-two to form parts that are 1 1/4" thick. Use clamps or place heavy objects on the MDF to ensure both parts bond properly. Let the glue dry and then cut the pieces according to the tables below.

Note that these two squares, made of two layers of MDF 5/8", will now be considered single squares, 1 1/4" thick, and the quantities shown in the tables refer to these new parts.

BEDSIDE TABLES (2): MDF, 1 1/4" x 48" x 48"

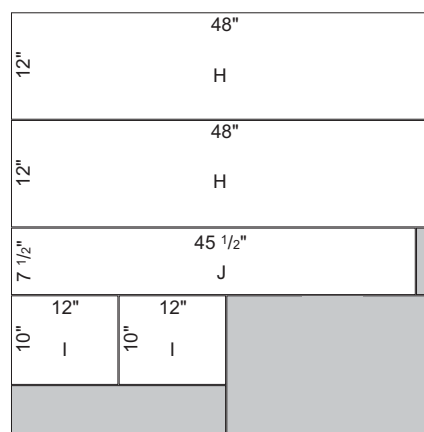
PIECES	QUANTITY	WIDTH (")	LENGTH (")
E TOP AND BOTTOM	4	10	20
F SIDE	4	10	8
G BACK	2	5 1/2	17 1/2

Cut the ends of parts E and F at a 45° angle.



CONSOLE (1): MDF, 1 1/4" x 48" x 48"

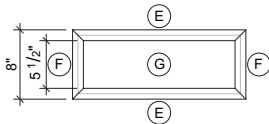
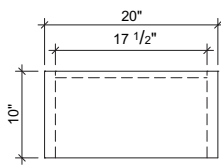
PIECES	QUANTITY	WIDTH (")	LENGTH (")
H TOP AND BOTTOM	2	12	48
I SIDE	2	10	12
J BACK	1	7 1/2	45 1/2



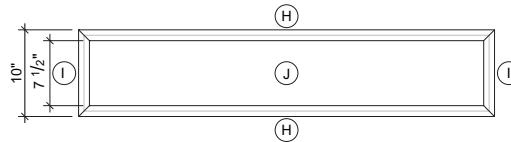
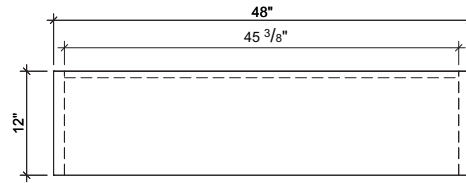
BEDSIDE TABLES AND CONSOLE

BEFORE ASSEMBLY (CONT'D)

ELEVATIONS



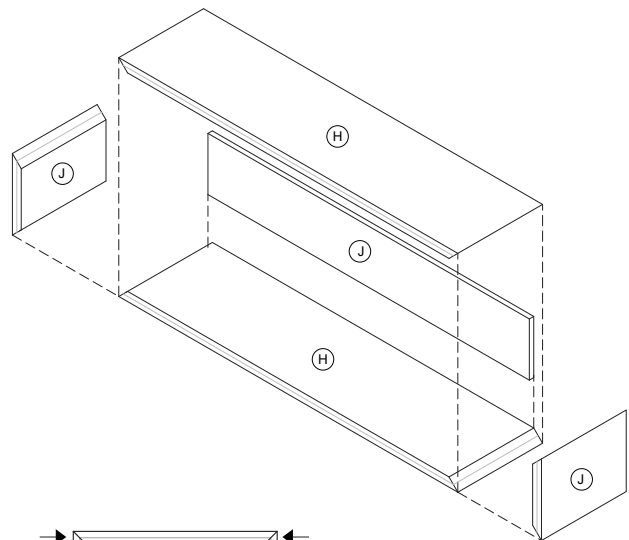
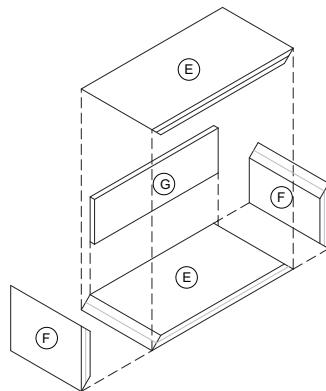
Bedside table



Console

ASSEMBLY

Assembly is the the same for both the bedside tables and the console.



- 12 Apply wood glue on the ends that are cut at an angle, and assemble the parts as illustrated.



- 13 Pre-pierce and screw the pieces from the side.
- 14 Insert the back into the frame, then screw from the side (pre-pierce beforehand).
- 15 Fill the screw holes with filler, then sand. Apply a primer coat and paint.

INSTALLATION

- 16 Find the studs in the walls (using a stud detector) and mark their locations.
- 17 Install the bedside tables and the console by screwing them into the studs with 2" screws.