

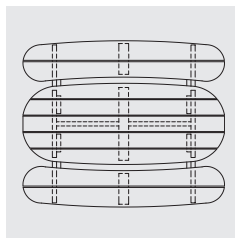
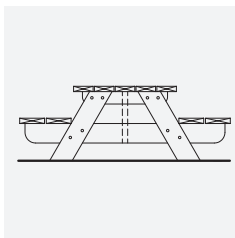
# BUILD AN OUTDOOR KID'S TABLE

## CONSTRUCTION PLAN



Difficulty level: ↑ | **EASY**

Completion time: **1 day**



# BUILD AN OUTDOOR KID'S TABLE

Allow the kids in your life to make those spécial memories by dining with siblings, cousins and friends their own size at a scaled-down version of a picnic table. What a treat to be able to sit by themselves and have their own conversations.

The tabletop measures 72" long by 24 1/2" wide with plenty of elbow room for those little bodies. The benches are only 12" off the ground and the tabletop just 9" above that, making it easy and safe for little ones to climb in and out.

This simple construction plan is a great first project for the Beginner DIY-er and could easily be completed in a day by the Intermediate.

The children will feel so special come meal time when they get to assemble in their very own dining space with no grown-ups allowed!



## TOOLS AND MATERIALS NEEDED

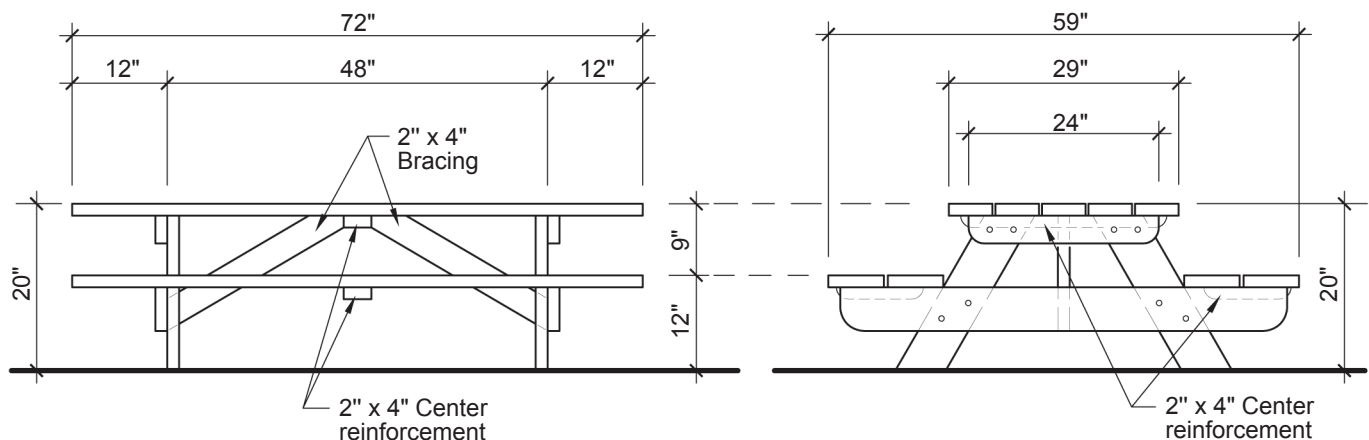
### TOOLS

- > 3/8" bit
- > 1/2" bit
- > 3" hole saw
- > Bevel square (optional)
- > Circular saw
- > Compass (optional)
- > Drill
- > Jigsaw
- > Mitre saw (optional)
- > Sandpaper
- > Screwdriver
- > Square
- > Tape measure

### MATERIALS

- > 2 lengths of 2" x 4" x 96" Treated Lumber
- > 1 length of 2" x 6" x 96" Treated Lumber
- > 1 length of 2" x 6" x 120" Treated Lumber
- > 4 length of 2" x 6" x 144" Treated Lumber
- > 2 length of de 2" x 8" x 144" Treated Lumber
- > Bois traité sous pression
- > 16 - 3/8" x 3 1/2" Galvanized lag screws (2 1/2")
- > 16 - 3/8" Galvanized nuts
- > 32 - 3/8" Galvanized washers
- > 100 - 1/2" exterior type screws

## ELEVATIONS



# **BUILD AN OUTDOOR KID'S TABLE**

## **NOTE ON TREATED WOOD**

### **TREATED WOOD SHOULD BE HANDLED WITH PRECAUTIONS.**

- Wear gloves and long sleeves when handling treated wood to avoid skin contact and to protect against splinters.
- Wear dust mask, eye protection, gloves and long sleeves when sawing, sanding or shaping treated wood to avoid skin contact with or inhalation of sawdust, to protect against splinters and to protect eyes from flying particles. When making cross cuts, use a cut sealer as the factory-treatment rarely goes to the heartwood.

### **DURING CONSTRUCTION**

- Apply a wood preservative on the cut ends.
- Use nails, screws, bolts, connectors and other hardware resistant to corrosion: stainless steel, hot dipped galvanized, yellow zinc or other hardware specially coated for outdoor use. Ordinary fasteners will rust, causing unsightly stains and weakening the structure, ultimately causing it to fail.
- Make certain the wood is thoroughly dry before painting or staining, and follow the coating manufacturer's recommendations. Use only good quality oil or acrylic coatings on water repellent pressure treated wood.
- Do not dispose of treated wood remnants or sawdust in compost heaps, wood chips, or mulch.
- Do not use it as animal bedding or litter.

Never burn treated wood.

## **CONTACT ADHESIVE**

Contact adhesive must always be applied to both surfaces and each surface must then be left to dry for the manufacturer's recommended time – usually about 10-15 minutes. You then press the two surfaces together, applying pressure from the centre outwards. They will adhere instantly and do not need to be clamped. Once they are stuck, you will no longer be able to move or adjust them. It is therefore important to handle the parts carefully and position them accurately. Do this work in a well-ventilated room, away from excessive heat or open flame.

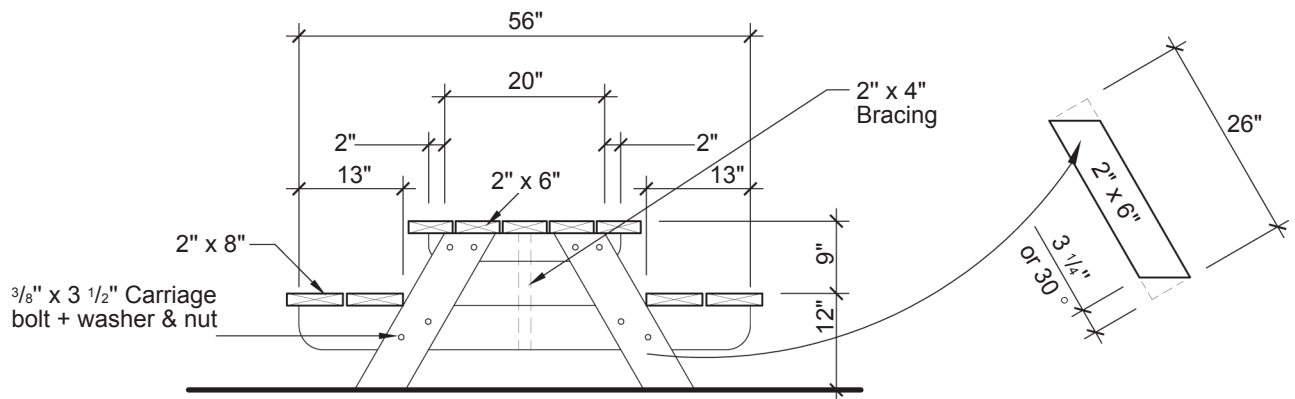
# BUILD AN OUTDOOR KID'S TABLE

## ASSEMBLY

### 1 CUT AND ASSEMBLE THE TABLE LEGS

Cut the eight pieces that will form the legs and the structure for the benches.

- 1.1 Use a compass or a simple round object to make the curves at the end of the boards.
- 1.2 Trace the curve and cut along the trace using a portable jigsaw.
- 1.3 Sand off the edges for a nice finish.
- 1.4 For assembling the pieces together, place them as indicated on the plan. Be sure to install them on a flat surface that can be damaged.
- 1.5 Drill  $\frac{3}{8}$ " holes through both boards. After all the holes are drilled, it is time to apply the glue if desired.
- 1.6 Join the pieces together with carriage bolts without forgetting to install the galvanized washers.

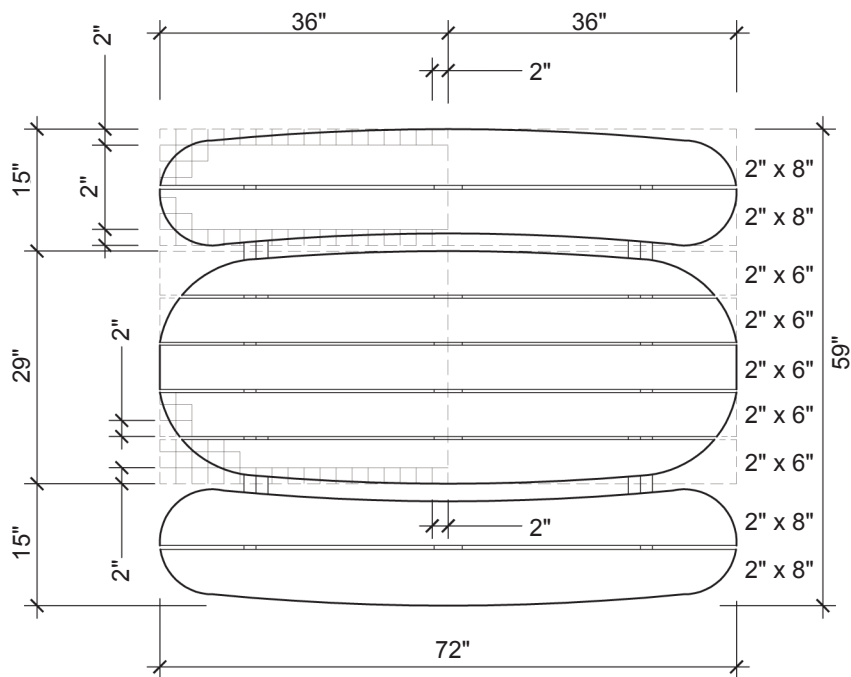


# BUILD AN OUTDOOR KID'S TABLE

## ASSEMBLY

### 2 CUT AND ASSEMBLE THE TABLETOP AND THE BENCHES

- 2.1 Copy the squared diagram onto a large sheet of paper. Each square equals 2" x 2".
- 2.2 Draw the curves of each plank on the sheet and then cut along the drawn line.
- 2.3 Use those sheets as templates to outline the shape on the 2" x 6" boards.
- 2.4 Using a portable jigsaw, cut the boards and then sand the edges.
- 2.5 Cut the centre supporting board.
- 2.6 Place them face down on a flat working surface. Make sure the spaces between the boards are even by using 3/8" shims.
- 2.7 Place the support piece right in center and fasten it in place with 2 1/2" screws. By inserting two screws for every board, you'll make sure everything stays right in place. Moreover, by placing your boards face down, you will be fastening into the support, which will hide your screw heads underneath the table.



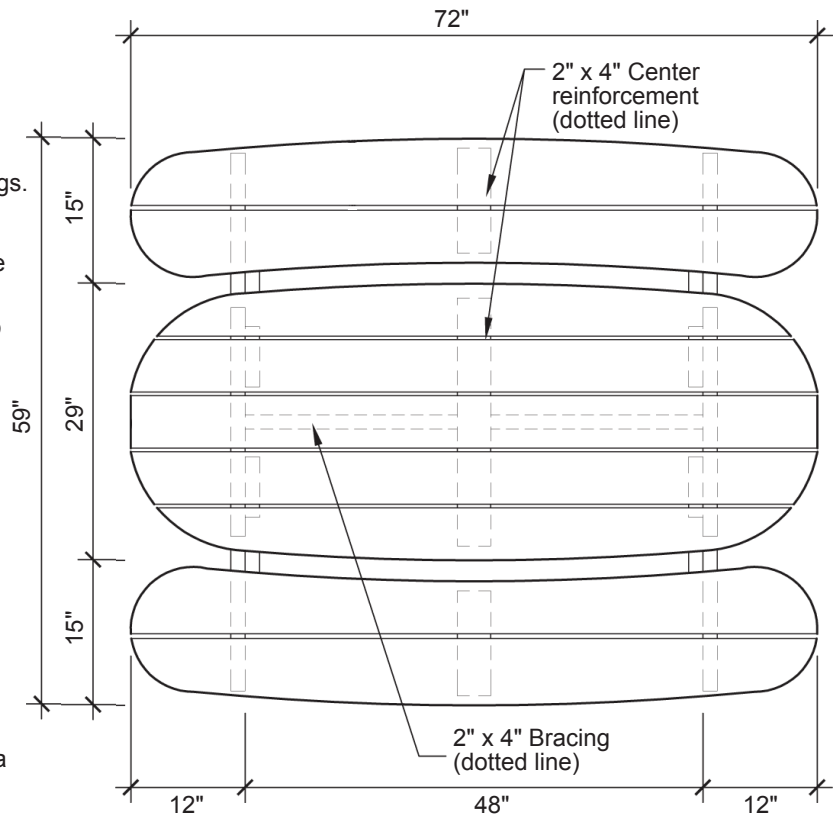
To reproduce rounded shapes, draw a 2" x 2" square grid as illustrated on drawing above and follow with cut pattern.

# BUILD AN OUTDOOR KID'S TABLE

## ASSEMBLY

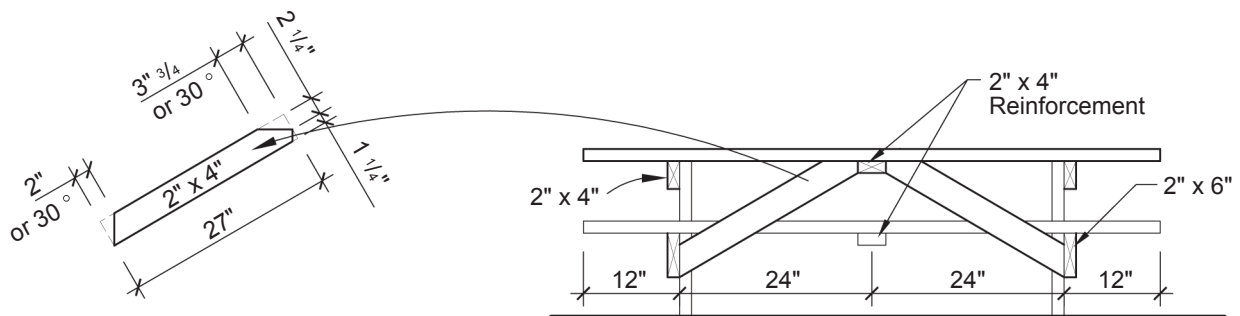
### 3 ASSEMBLE THE TABLE

- 3.1 Leaving the top of the table face down, use a pencil and mark the location of the legs.
- 3.2 Using a drill and  $\frac{3}{8}$ " bit, drill holes 2" deep in the location where the screws will join the tabletop.  
A good way to make sure you won't drill too deep is by installing a piece of tape 2" from the tip of your bit.  
At least three holes will be required for each leg.
- 3.3 Make sure the screws are aligned with a plank and not with a space.
- 3.4 Place the legs back in the location you marked. Install the screws in the  $\frac{3}{8}$ " holes. You may need an extension on your drill bit to be able to work properly. If you don't have one, simply use a screwdriver.
- 3.5 Use a square to make sure the legs are at a 90° angle with the table top.



### 4 INSTALL THE BRACES

- 4.1 Cut the braces.
- 4.2 Screw them in place by screwing directly into the top of the table.
- 4.3 Use two screws at each extremity of each braces.



### 5 INSTALL THE BENCHES

- 5.1 Turn your table face up and fasten the benches in place.
- 5.2 Drill  $\frac{3}{8}$ " holes 3" deep and use 3  $\frac{1}{2}$ " screws in that case.
- 5.3 Use at least 8 screws for each bench.