

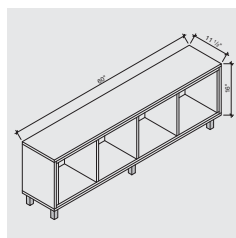
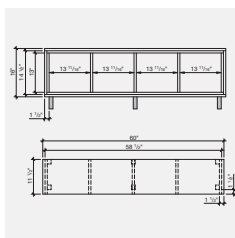
STORAGE BENCH AND SHELF UNIT

CONSTRUCTION PLAN



Difficulty level: **T** | EASY

Completion time: **Less than 8 hours**



STORAGE BENCH

This multi-purpose storage bench looks great in a hallway or bedroom, alone or combined with the shelf unit.

Measuring 60" wide and 16" high (without the legs), this bench is easy to build and oh-so-practical!

Two layers of MDF $\frac{3}{4}$ " are used to build the box, forming a solid frame into which dividers are inserted.



TOOLS AND MATERIALS NEEDED

TOOLS

- > Table saw
- > Screwdriver-drill (electric or cordless)
- > Measuring tape
- > Countersink drill bit for No. 8 screws
- > Pencil
- > Carpenter's square

MATERIALS

- > 1 sheet MDF, $\frac{3}{4}$ " x 48" x 96"
- > 1 $\frac{1}{4}$ " No. 8 screws
- > Wood glue
- > 6 legs

BEFORE ASSEMBLY

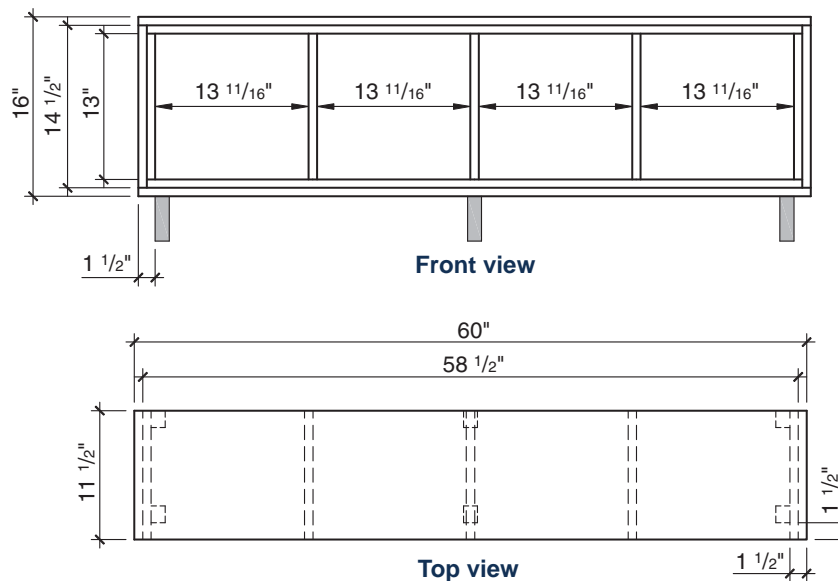
CUTTING PLAN

Mark each piece clearly with the corresponding letter before assembling. After cutting the pieces, sand the edges smooth.

MDF, $\frac{3}{4}$ " x 48" x 96"

PIECES	QUANTITY	WIDTH (")	LENGTH (")
A TOP / BOTTOM	2	11 $\frac{1}{2}$	58 $\frac{1}{2}$
B SIDE / DIVISION	5	11 $\frac{1}{2}$	13
C TOP / BOTTOM	2	11 $\frac{1}{2}$	60
D SIDE	2	11 $\frac{1}{2}$	14 $\frac{1}{2}$

ELEVATIONS



STORAGE BENCH

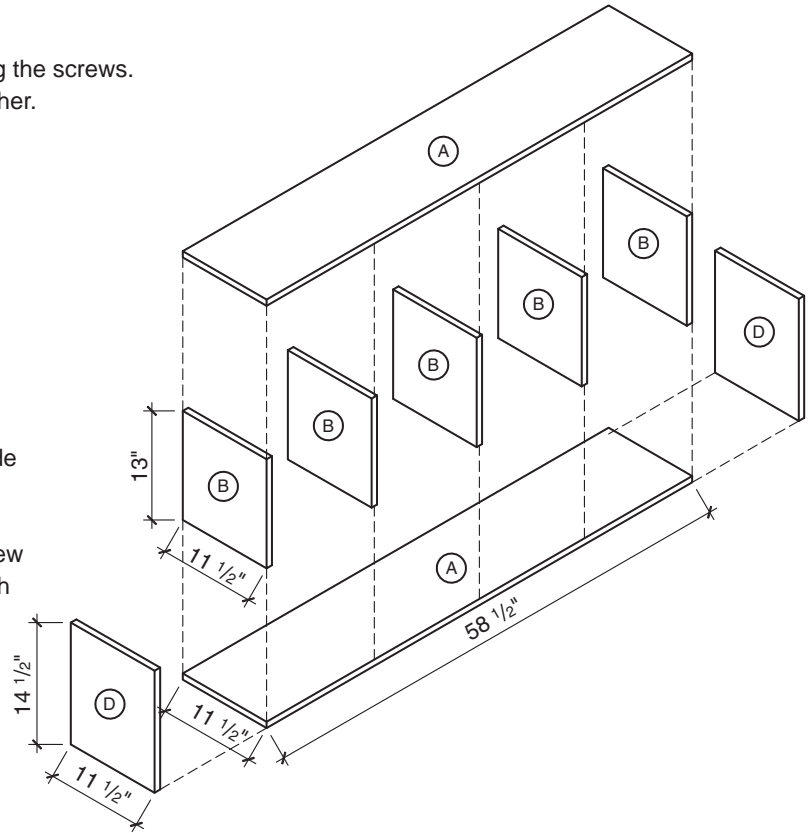
BENCH ASSEMBLY

Always pre-drill holes use a countersink bit before inserting the screws.
Glue all pieces into place first before screwing them together.

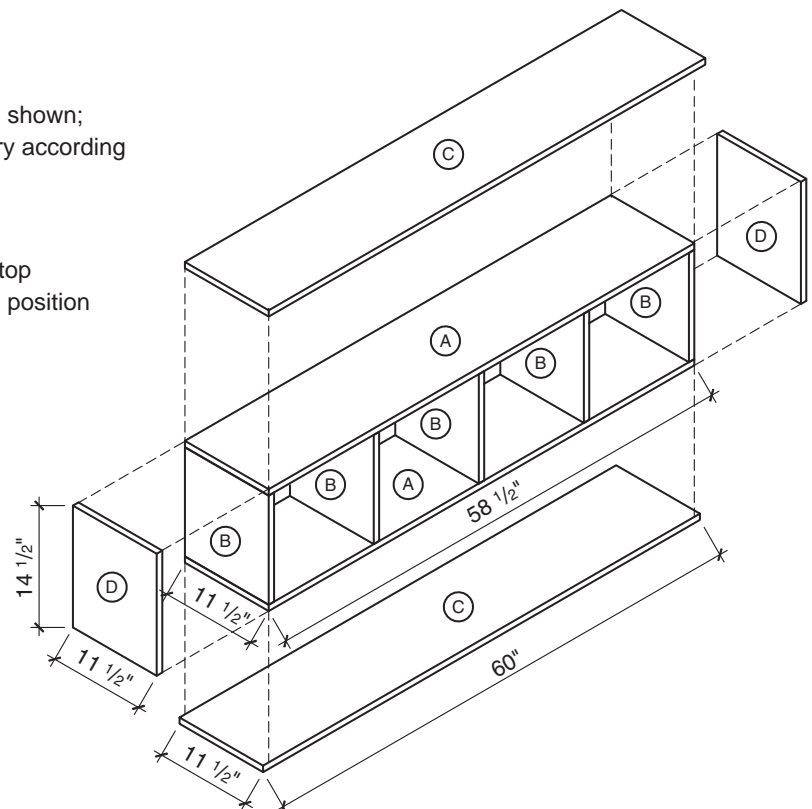
INNER BOX

- 1 Assemble the inside "box" by screwing parts B between top and bottom A (one part B at each end of A).
- 2 The other parts B act as dividers and will form four compartments $13 \frac{11}{16}$ " wide. Using this measurement, make pencil marks on either side of top and bottom parts A so that you know both where to position the dividers and where to insert the screws. Slide the dividers into position and screw them into place directly through the top and through the bottom of parts A.

Note: Do not align the screw on the pencil markings as these indicate the outside edges of B, not the centre. For greater accuracy, mark each side of the dividers B onto the top and bottom parts A and insert the screws between the pencil marks.



- 3 Apply wood glue to attach sides D to the bench, as shown; use clamps to hold them in position. Let the glue dry according to manufacturer's instructions.
- 4 Glue the outer top and bottom parts C to the inner top and bottom parts A and use clamps to hold them in position until the glue is dry.
- 5 Paint the bench.
- 6 Screw the six legs into the base of the bench (four corners and middle). The three back legs should be flush with the back edge of the bench, while the three front legs should be set back about $1 \frac{1}{2}$ " from the front edge. The legs at the four corners must be set in about $1 \frac{1}{2}$ " from the side edges.



SHELF UNIT

This shelf unit, an optional addition to your project, measures 19 1/2" wide by 75 1/2" high. It is the perfect partner to the storage bench.

What's more, it is constructed in exactly the same way as the bench, the main frame being built from a double layer of 3/4" MDF to form a solid box, into which dividers are inserted (in this case, the dividers become the shelves).



TOOLS AND MATERIALS NEEDED

TOOLS

- > Table saw
- > Screwdriver-drill (electric or cordless)
- > Measuring tape
- > Countersink drill bit for No. 8 screws
- > Pencil
- > Carpenter's square

MATERIALS

- > 2 sheets MDF, 3/4" x 48" x 96"
- > 1 1/4" No. 8 screws
- > Wood glue

BEFORE ASSEMBLY

CUTTING PLAN

Mark each piece clearly with the corresponding letter before assembling. After cutting the pieces, sand the edges smooth as necessary. The quantities listed are for one (1) bookcase.

MDF, 3/4" x 48" x 96"

PIECES	QUANTITY	WIDTH (")	LENGTH (")
E TOP / BOTTOM / SHELF	6	11 1/2	16 1/2
F SIDE	2	11 1/2	74
G TOP / BOTTOM	2	11 1/2	18
H SIDE	2	11 1/2	75 1/2

SHELF UNIT

SHELF UNIT ASSEMBLY

The shelf unit is assembled in exactly same way as the bench. Only the measurements are different. Always use a countersink bit to pre-drill holes before inserting the screws. Glue the pieces into place first before screwing them together.

- 1 Assemble the inside "box" by screwing two parts E between sides F (one part E at each end of F).
- 2 The other parts E will become the shelves, forming five compartments of 14". Using this measurement, make pencil marks on the inside and outside of parts F so that you know both where to position shelves E and where to insert the screws. Align the shelves with these marks, slide them into position and screw them in place directly through the sides of F.

Important note: Do not align the screw on the pencil mark itself, as this indicates the outer edge of E, not its centre. For greater accuracy, mark each edge of E (i.e. the thickness of the shelf) onto F and align the screw between the two pencil marks.

- 3 Apply wood glue to attach sides H to each side of the bookcase and use clamps to hold them in position. Let the glue dry according to manufacturer's instructions.
- 4 Glue top and bottom G to parts E and use clamps to hold them in position until the glue is dry.
- 5 Paint the shelf unit.

