

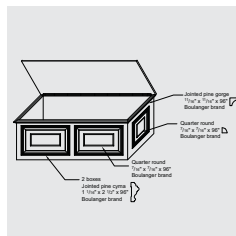
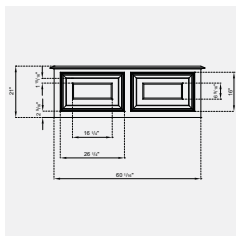
# CHEST-BENCH

## CONSTRUCTION PLAN



Difficulty level: **T** | EASY

Completion time: **Less than 5 hours**



# CHEST-BENCH

Lift the cover: it's a chest. Place cushions on it: it's a bench!

Although this plan proposes a painted MDF construction, a do-it-yourselfer who wants natural wood furniture may prefer to replace MDF with pine, cherry wood or an exotic wood essence matching existing furniture, and then tint it to the desired colour.



## TOOLS AND MATERIALS NEEDED

### TOOLS

- > Benchsaw or circular saw equipped with a guide block
- > Electric drill (plug in or portable)
- > Depth stop for 1/8" drill bit
- > Depth stop for 3/8" drill bit
- > Finishing nail gun (optional)
- > Tape measure
- > Angle
- > Pencil
- > Sander

### MATERIALS

- > 2 MDF sheets, 5/8" x 48" x 96"
- > 2 jointed pine cymas, 1 1/16" x 2 1/2" x 96" Boulanger brand
- > 1 quarter rounds, 7/16" x 7/16" x 96", Boulanger brand
- > 1 jointed pine gorge, 1/16" x 7/16" x 96" Boulanger brand
- > 100 screws 1 1/4" No. 8 flat head
- > 40 screws 5/8" No. 8 flat head
- > 3 squared wood pieces, 1" x 1" x 96"
- > Wood glue
- > Ultra fine sandpaper sponge block
- > 150 grain sandpaper
- > 1 joint-frame, 5/8" x 58" long
- > 1 package of felts

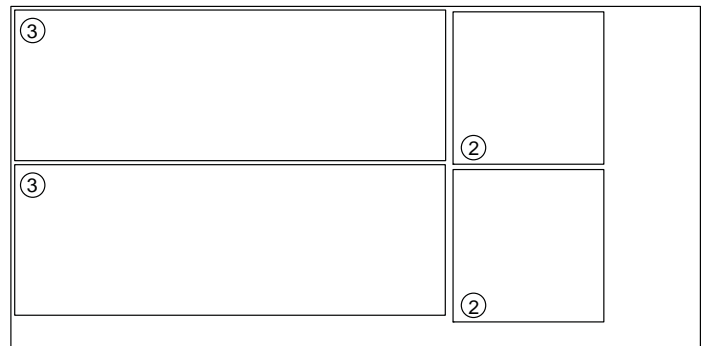
## BEFORE ASSEMBLY

### CUTTING LIST

There are a lot of parts to be cut, so be sure to identify each one before assembly.

MDF, 5/8" x 48" x 96"

PIECES	QUANTITY	WIDTH (")	LENGTH (")
2 SIDE	2	19	21
3 FRONT + REAR	2	21	60

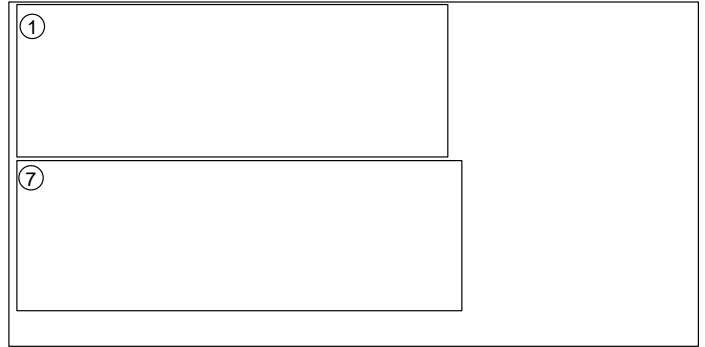


# CHEST-BENCH

## BEFORE ASSEMBLY (CONT'D)

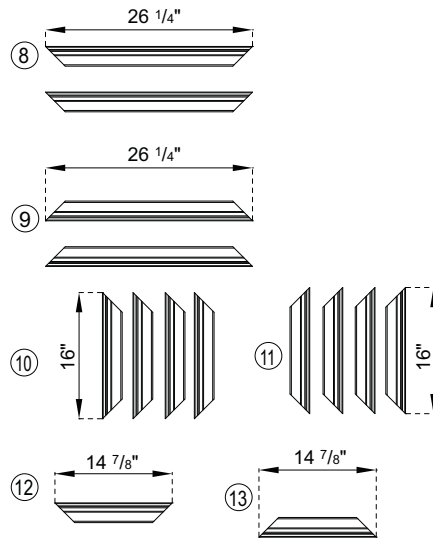
MDF, 5/8" x 48" x 96"

PIECES	QUANTITY	WIDTH (")	LENGTH (")
1 BOTTOM	1	21 1/4	60
7 TOP	1	21 11/16	61 3/8



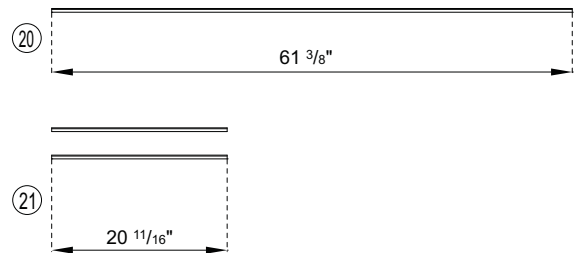
Decorative moulding  
Jointed pine cyma #81517, 1 1/16" x 2 1/2" x 96"

PIECES	QUANTITY	WIDTH (")	LENGTH (")
8 FRONT UPPER	2	2 1/2	26 1/4
9 FRONT LOWER	2	2 1/2	26 1/4
10 FRONT LEFT	4	2 1/2	16
11 FRONT RIGHT	4	2 1/2	16
12 SIDE UPPER	1	2 1/2	14 7/8
13 SIDE LOWER	1	2 1/2	14 7/8



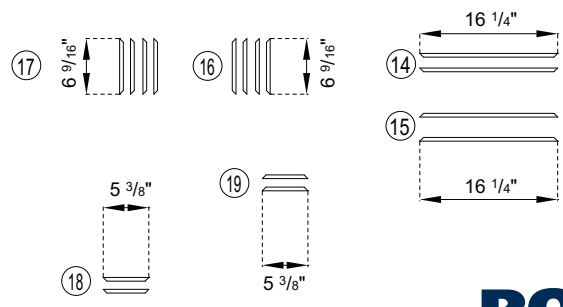
Decorative moulding  
Jointed pine gorge #81330, 11/16" x 11/16" x 96"

PIECES	QUANTITY	WIDTH (")	LENGTH (")
20 FRONT	1	11/16	61 3/8
21 SIDE	1	11/16	20 11/16



Decorative moulding  
Jointed pine quarter round #85290, 7/16" x 7/16" x 96"

PIECES	QUANTITY	WIDTH (")	LENGTH (")
14 FRONT UPPER	1	7/16	16 1/4
15 FRONT LOWER	1	7/16	16 1/4
16 FRONT RIGHT	4	7/16	6 9/16
17 FRONT LEFT	4	7/16	6 9/16
18 SIDE UPPER	2	7/16	5 3/8
19 BOTTOM LOWER	2	7/16	5 3/8

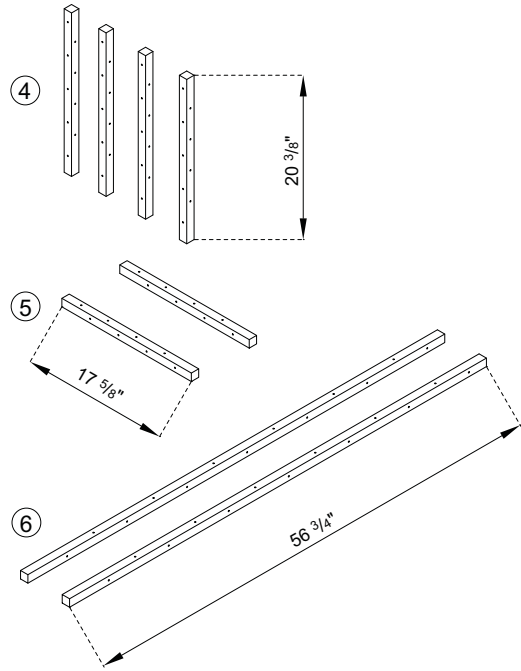


# CHEST-BENCH

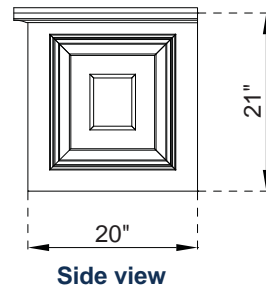
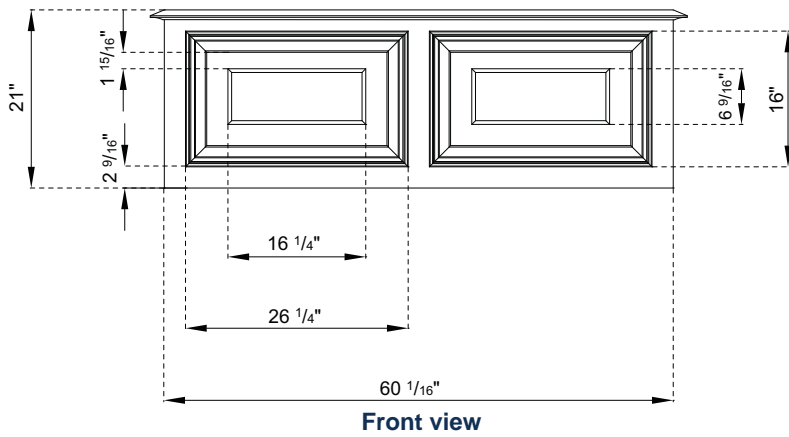
## BEFORE ASSEMBLY (CONT'D)

Squared wood, 1" x 1" x 96"

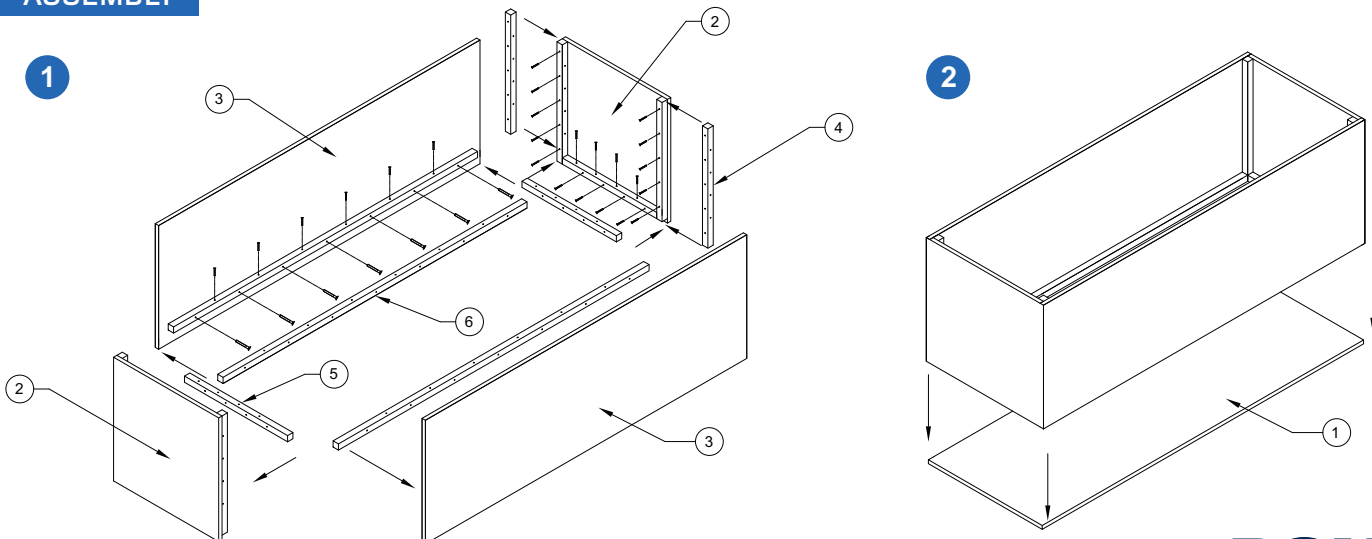
PIECES		QUANTITY	WIDTH (")	LENGTH (")
4	INTERIOR SIDES	4	1	20 <sup>3</sup> / <sub>8</sub>
5	INTERIOR SIDES	2	1	17 <sup>5</sup> / <sub>8</sub>
6	INTERIOR FRONT, REAR	2	1	56 <sup>3</sup> / <sub>4</sub>



## ELEVATIONS

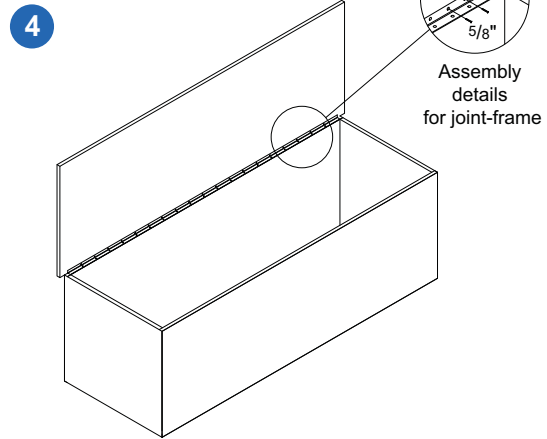
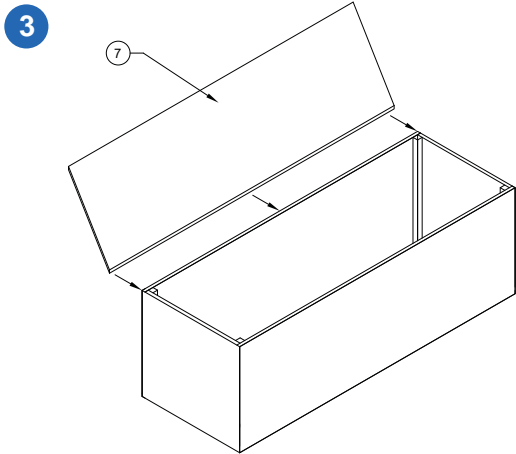


## ASSEMBLY



# CHEST-BENCH

## ASSEMBLY (CONT'D)



**5 ASSEMBLY OF DECORATIVE MOULDINGS**

